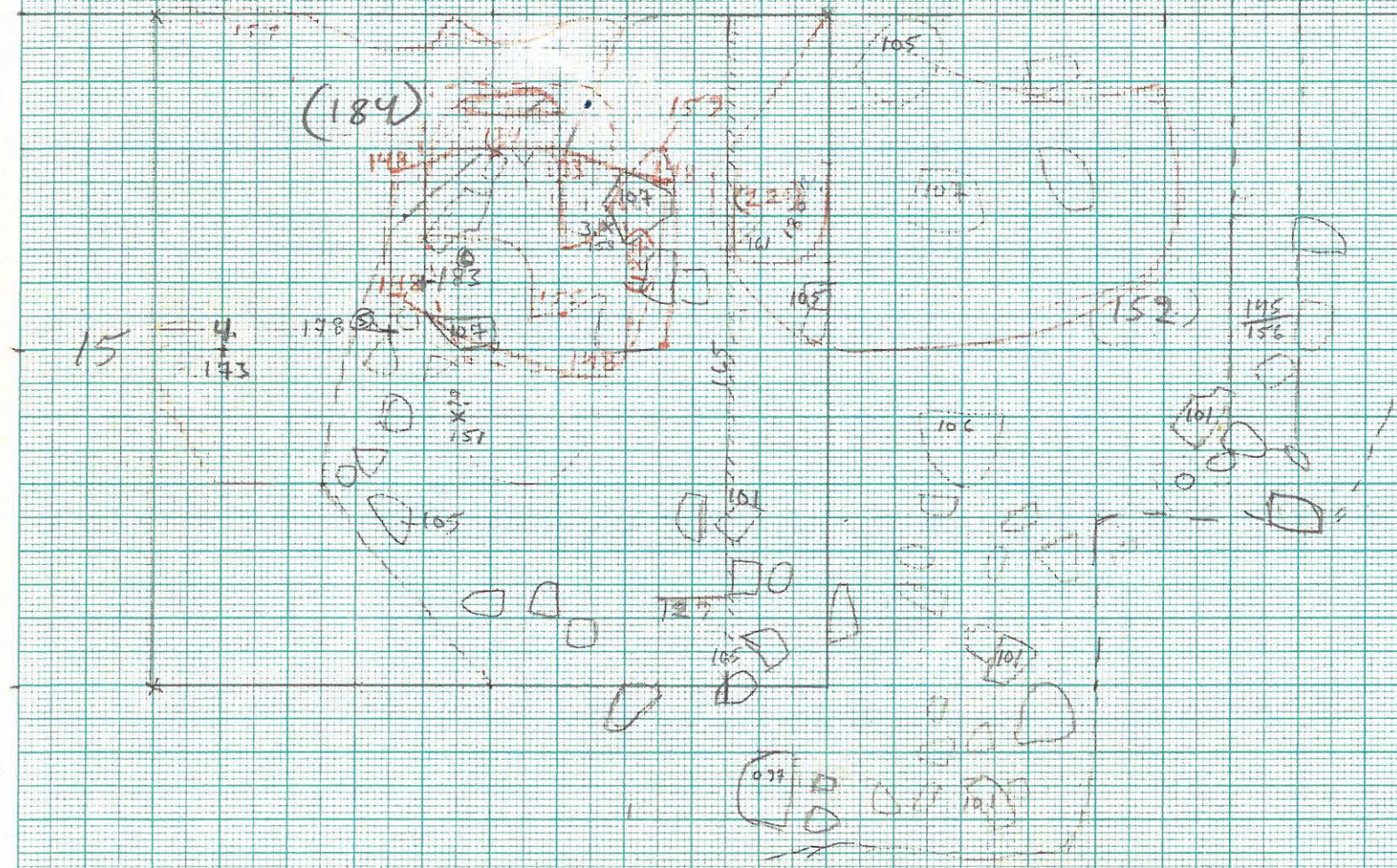


Kotemäki
Vallila
Pöytä 1:20

V

VI



1:20

IV

V

15

204

121

(139)

114

154

154

116

157

150

Vatemiäki
Vallila
Pispa

1:20

220

1:50

1:20

III myr. 14

II myr. 14

6,2

15

5,8

III

IV

V

163
181
(160)

134
165
155
114

079
(115)

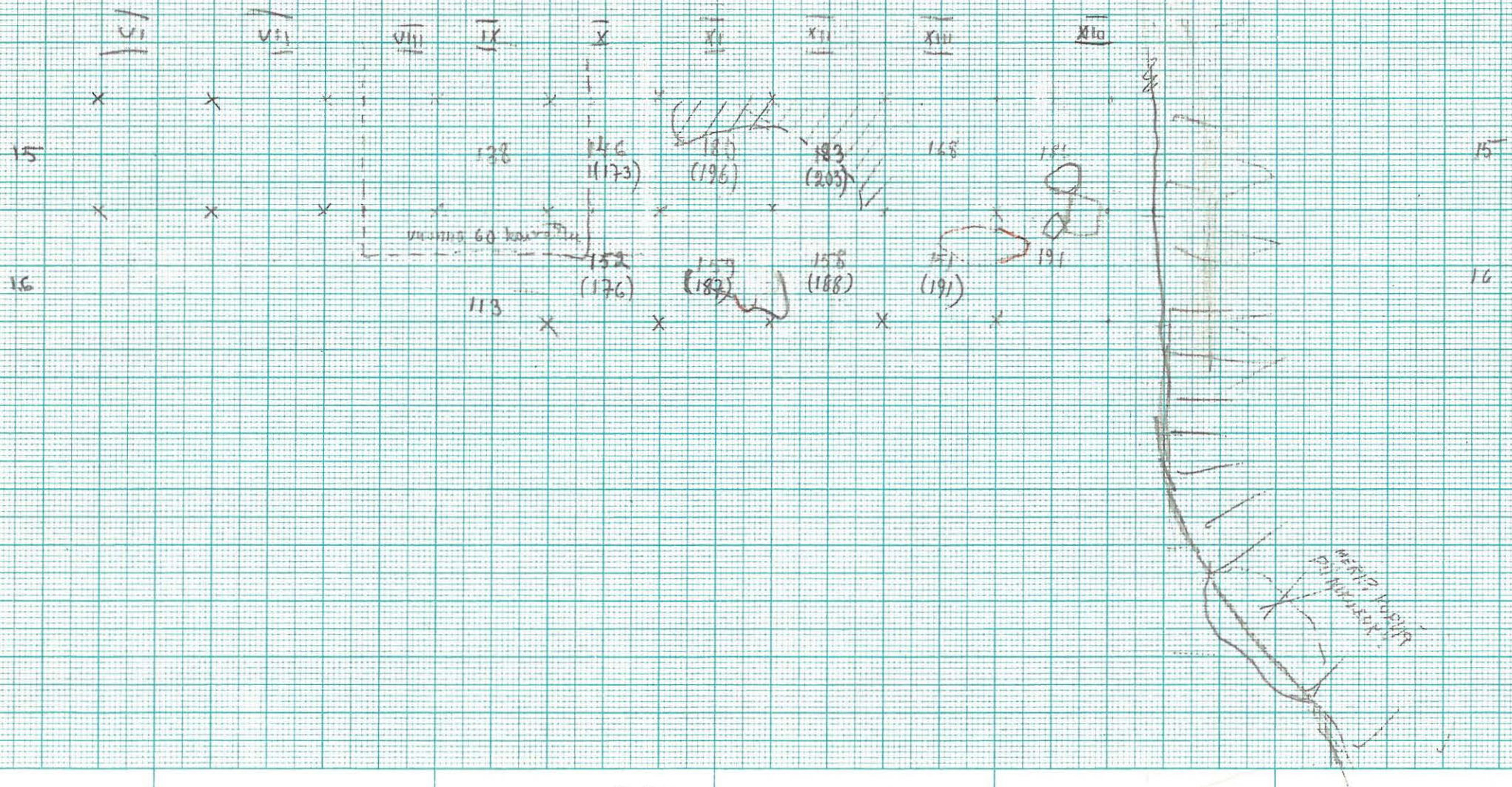
079
(114)

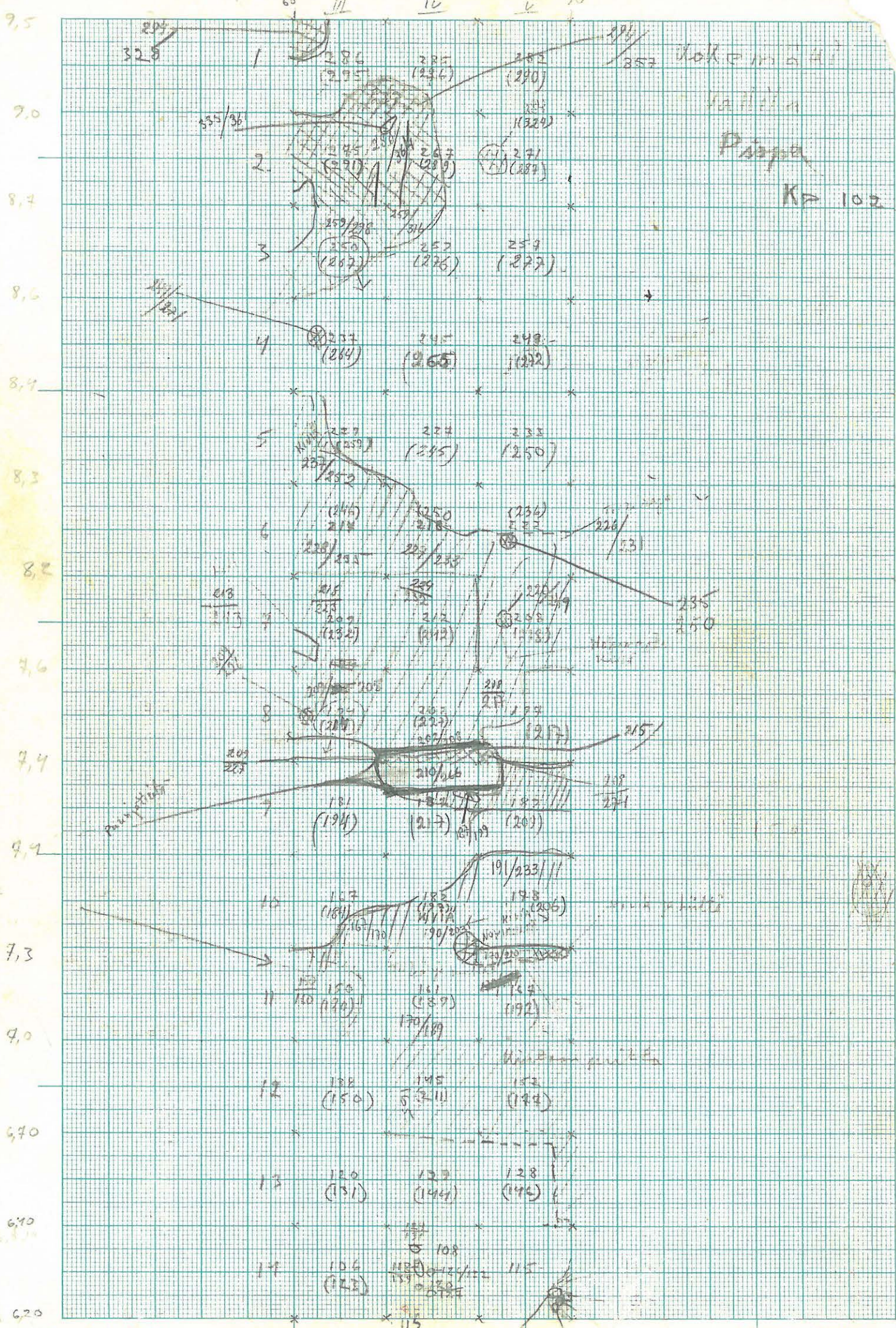
078
1

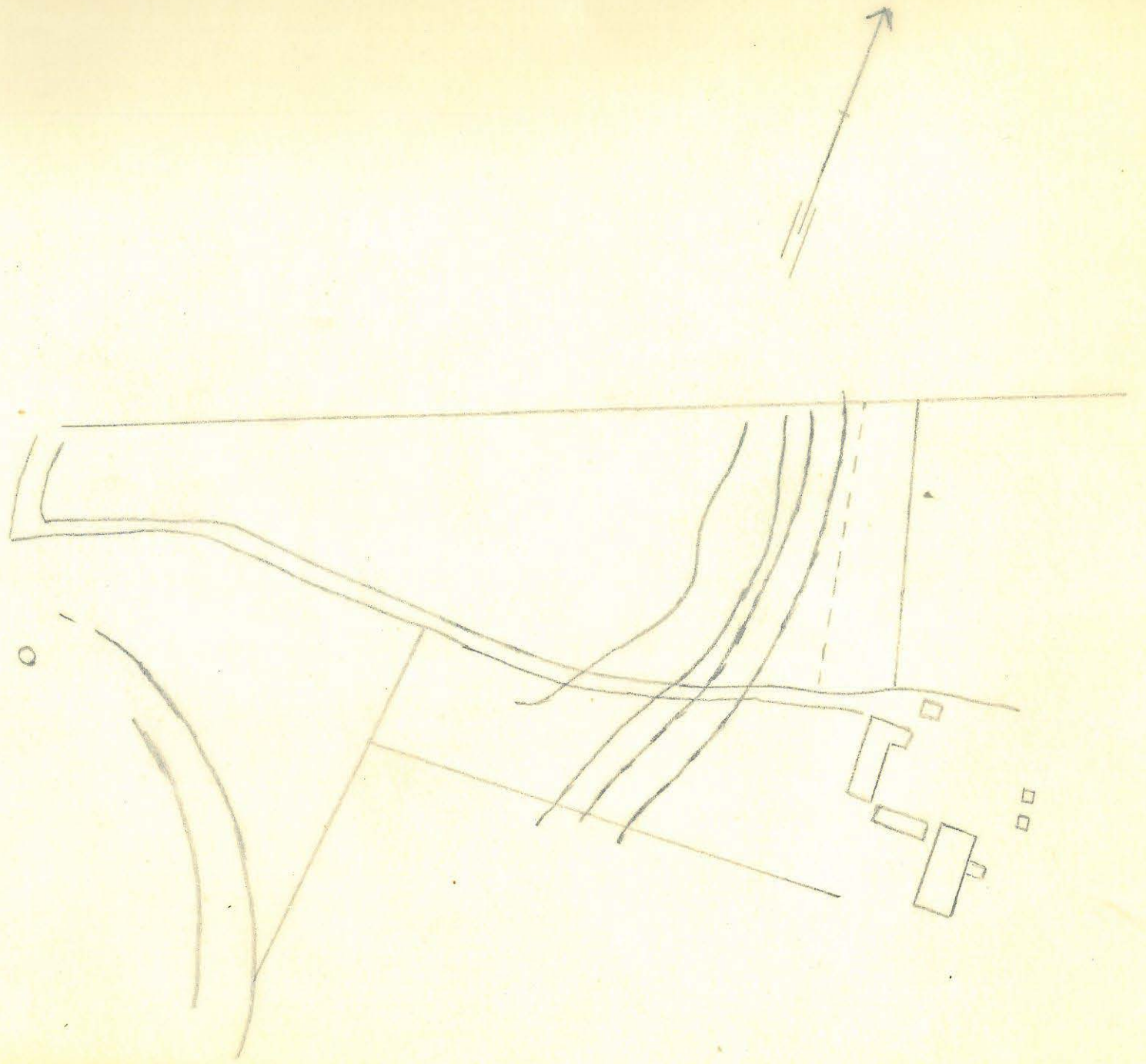
099

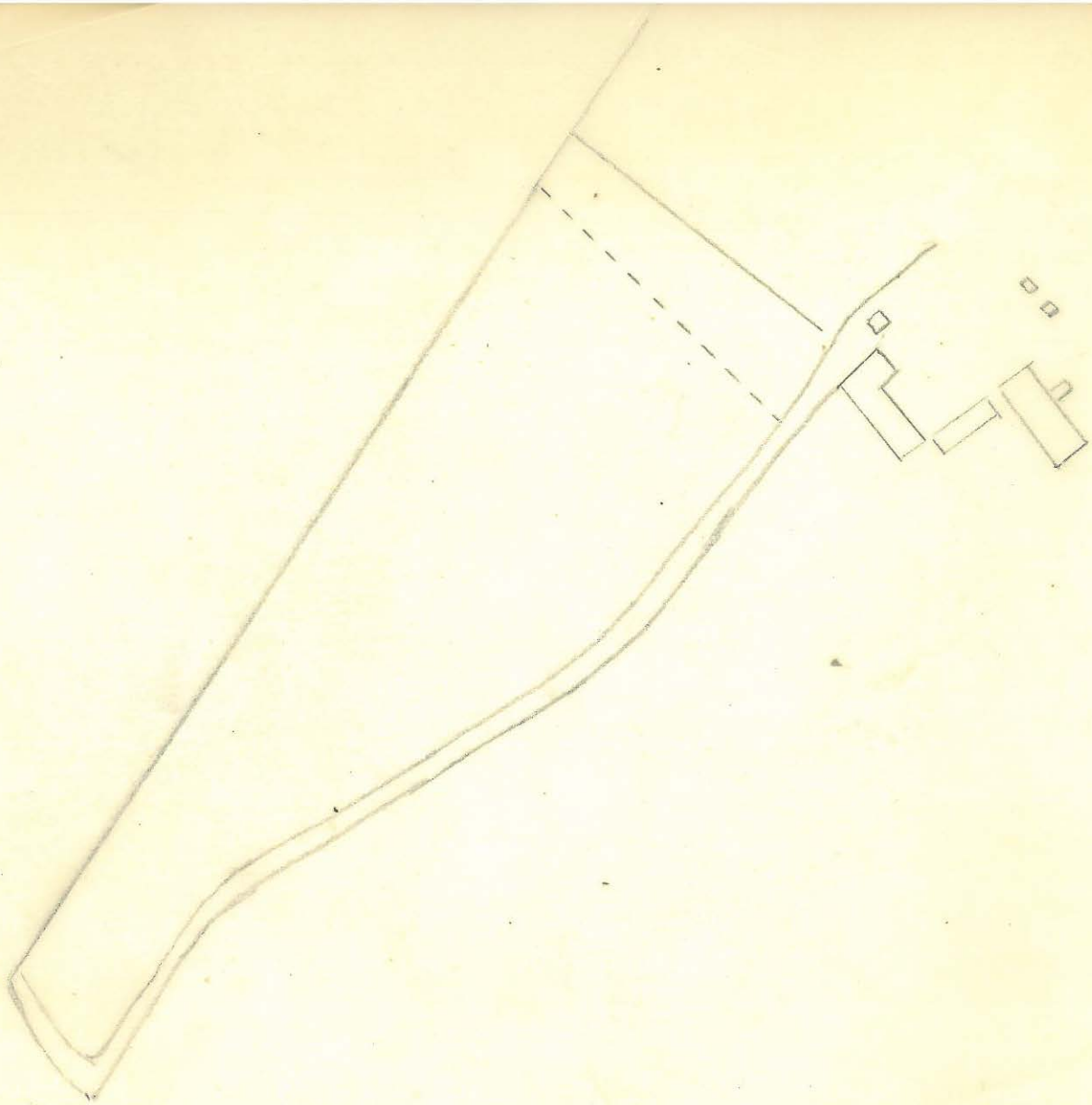
lanta

Kolmenik Vallila, Pärnu





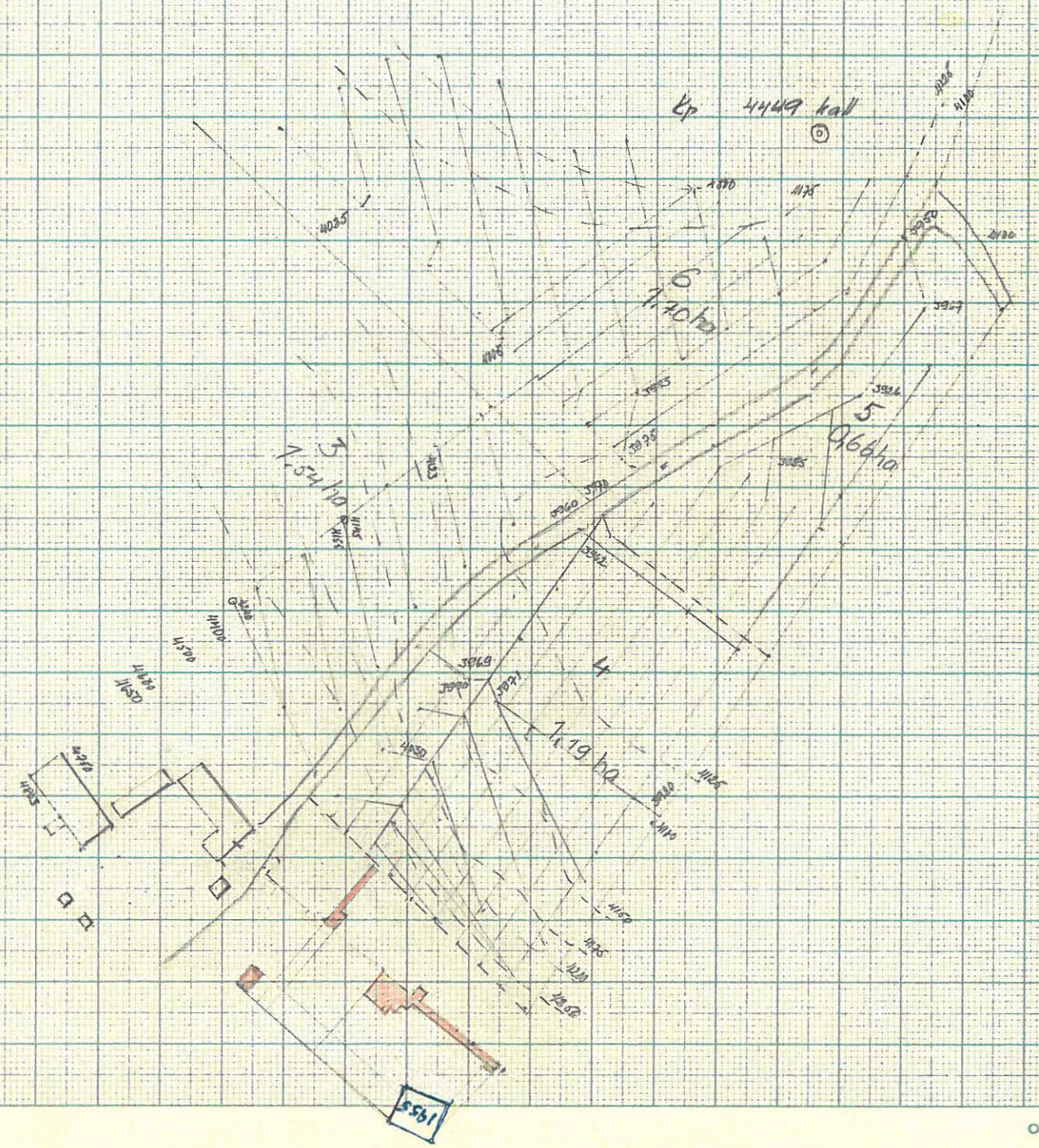




→ 12,30 m 7,5 m stala seinä
5,5 m

PISPAN TILA

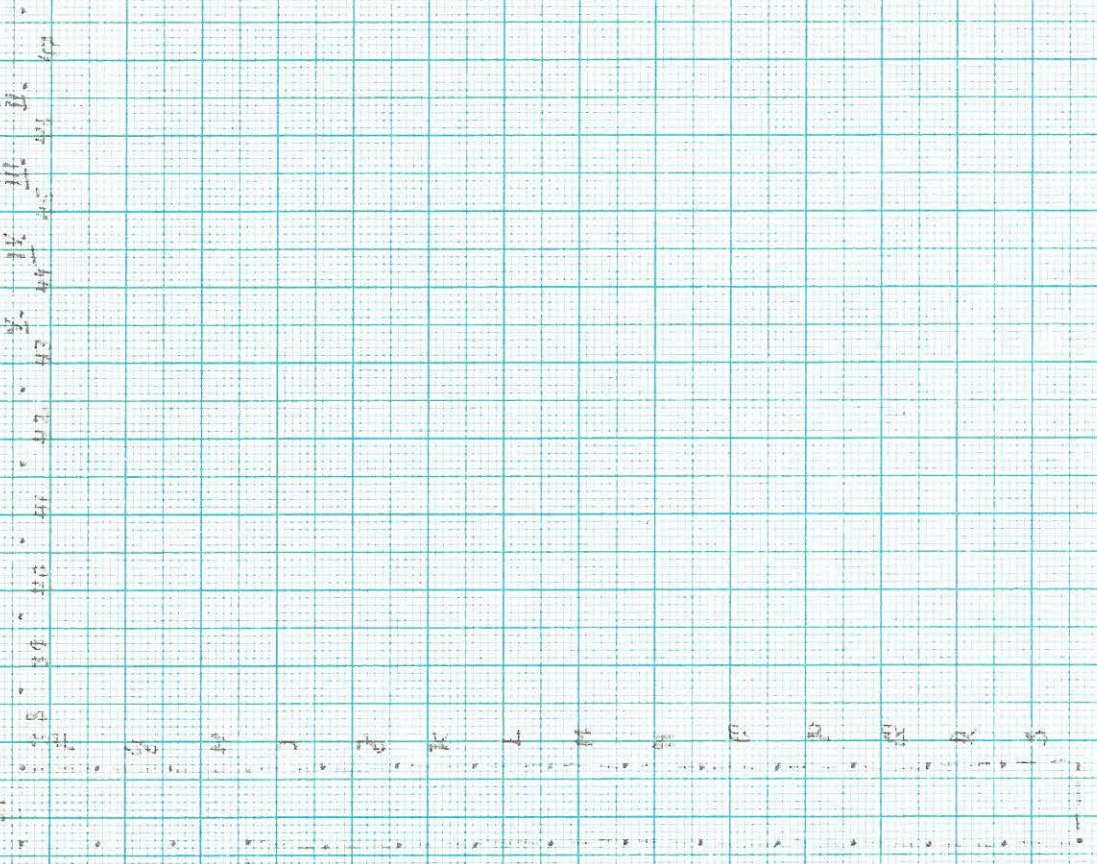
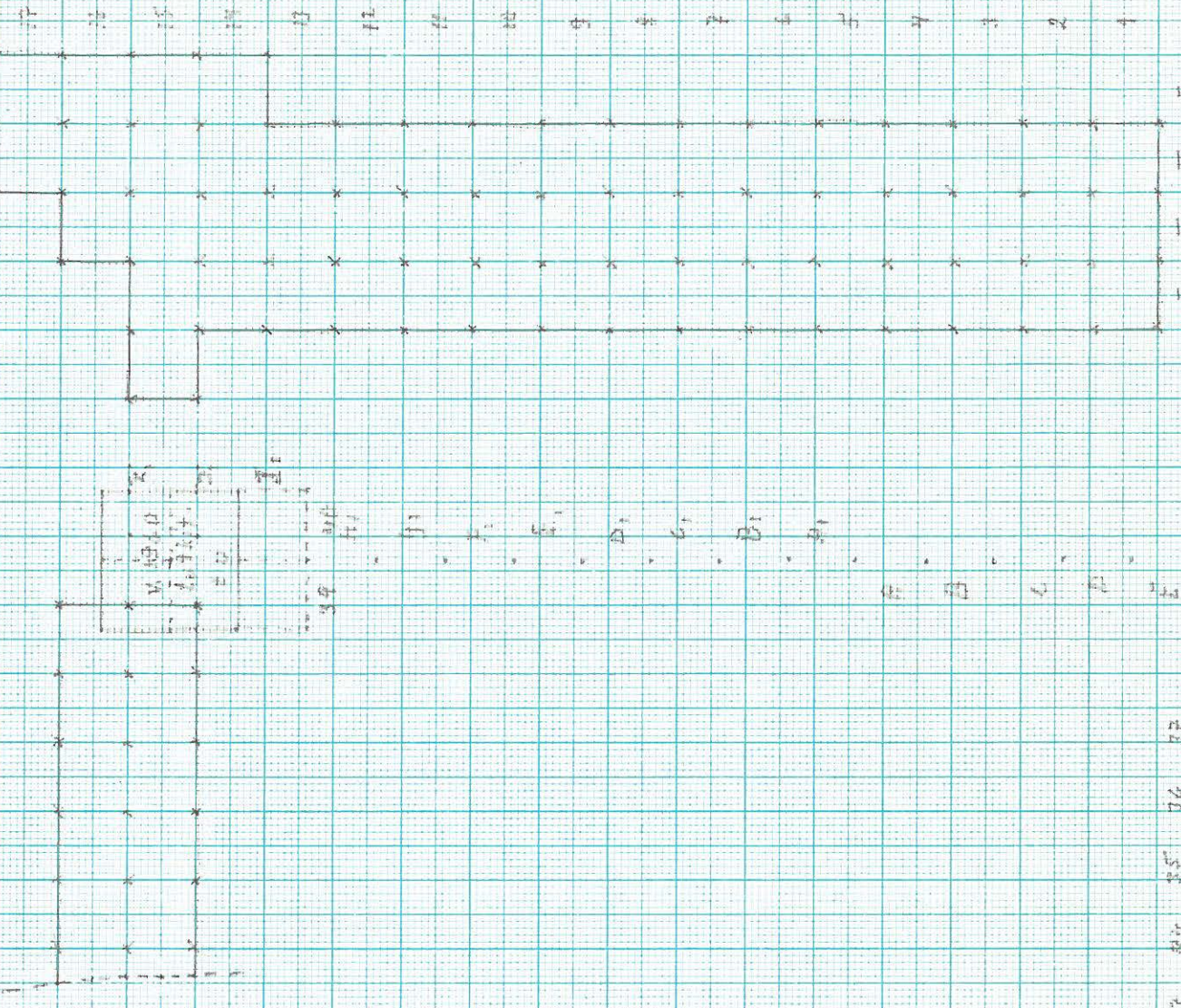
*



MITTAKAAYA 1:2000

14
2
1961

III
II
I
IV
V
VI
VII
VIII
IX
X
XI
XII



XII:15 XIII:15
XII:16 XIII:16

XIV:15
XIV:16

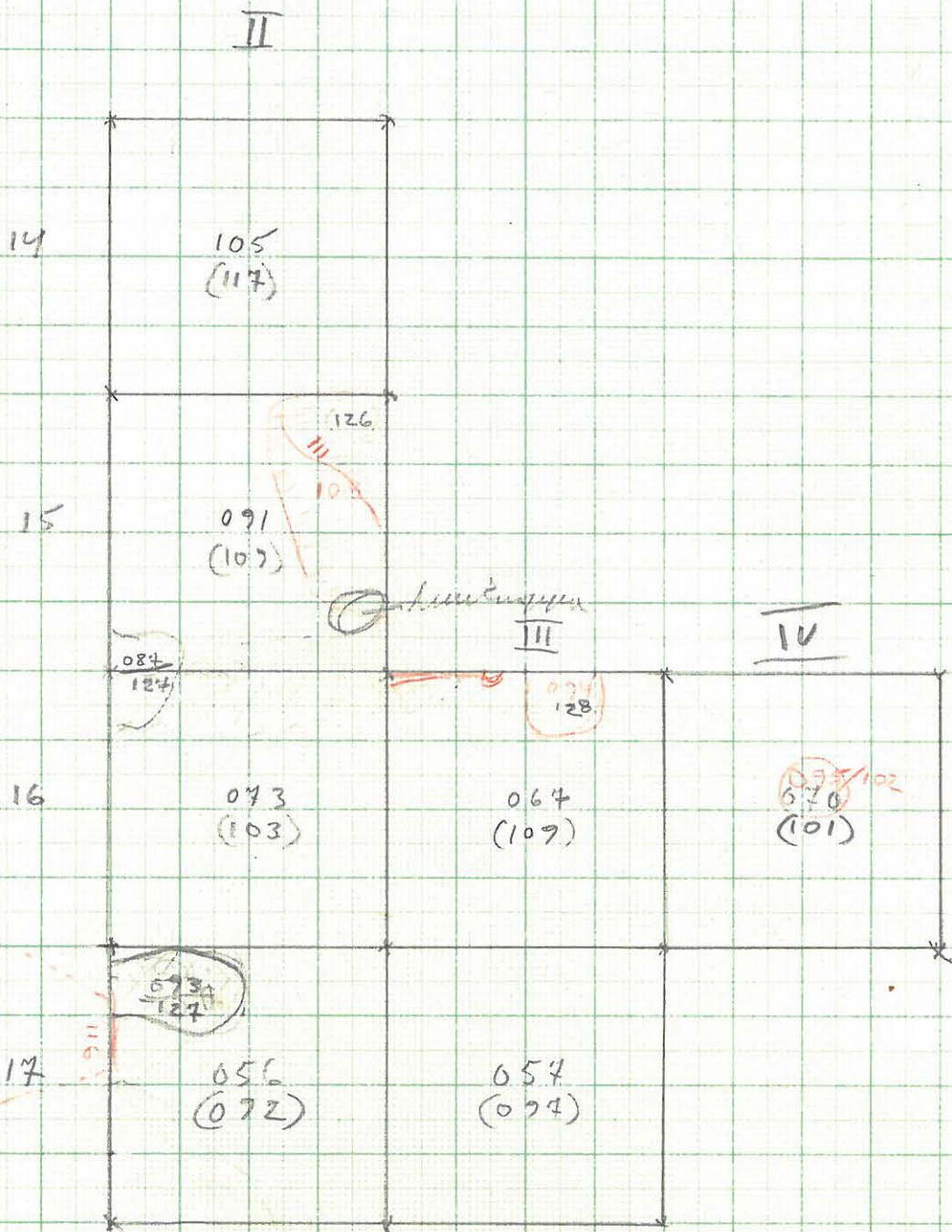


KOKEMÄKI, VALLILA, Piispa

Piirrt. R. Holtzheer - 61

1:20

Kotemäki
Vallila, Pispala



1:50

1:25

285
238
17

0 50 100 200

0
25
50
100
150

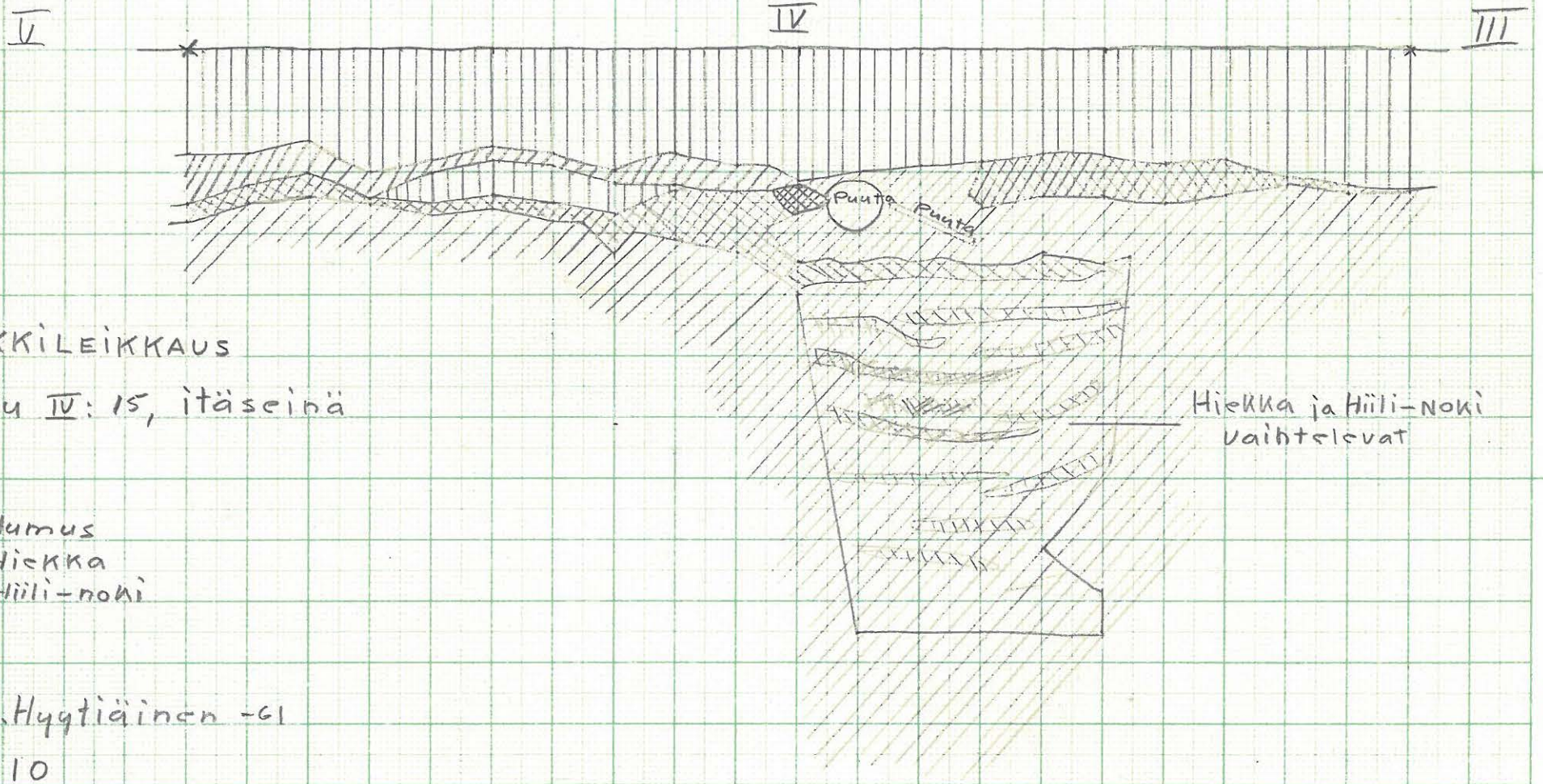
A 4 (210x287 mm)

Op. Wulf Ab. N. 106



KOKEMÄKI

Vallila, PISPA



Poikkileikkaus

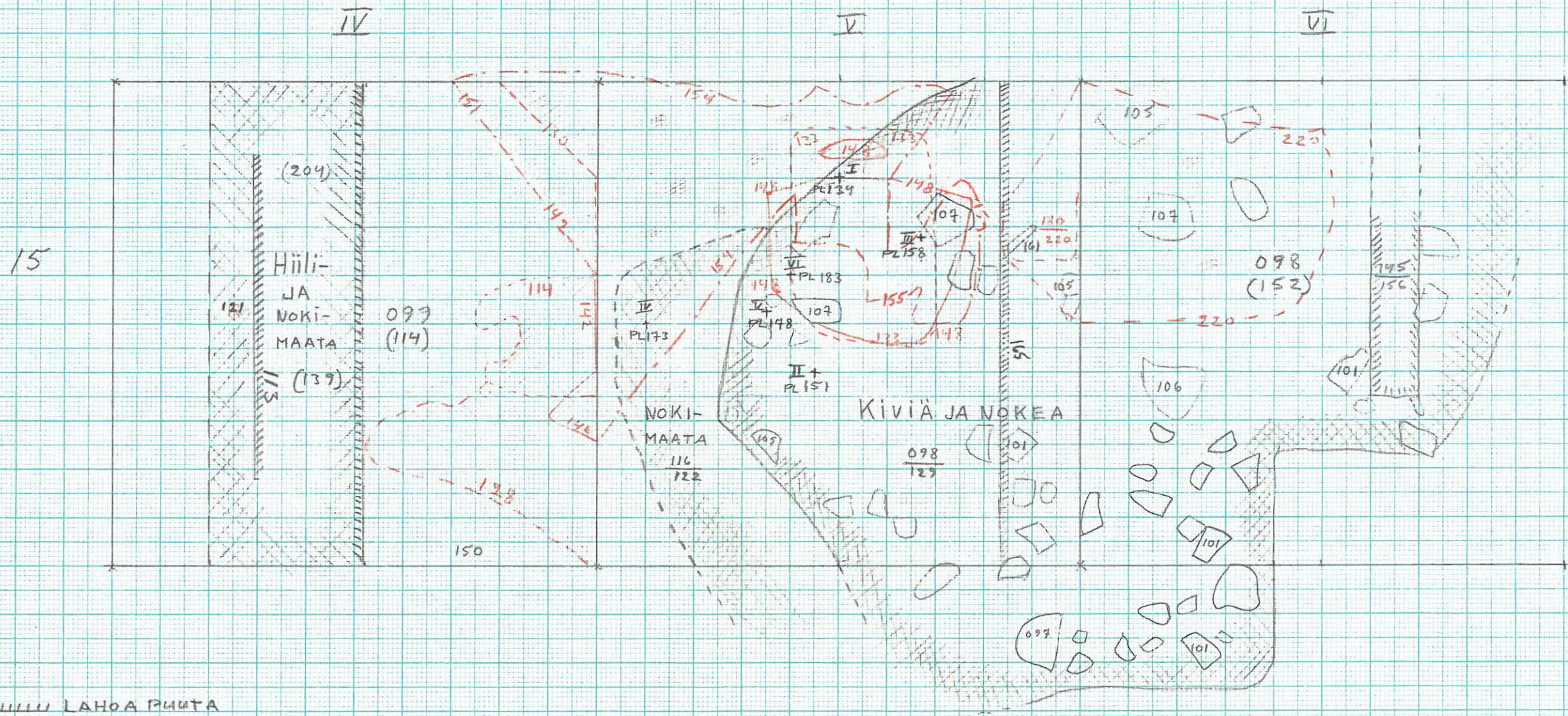
Ruutu IV: 15, itäseinä

- ||||| = Humus
- ////// = Hiekka
- xxxxx = Hiili-noki

Piirt. J. Hyytiäinen -61

1:10

KOKEMÄKI Vallila, Pispala



Piirt. J. Hyttiäinen 1961

1:20

XII: 15

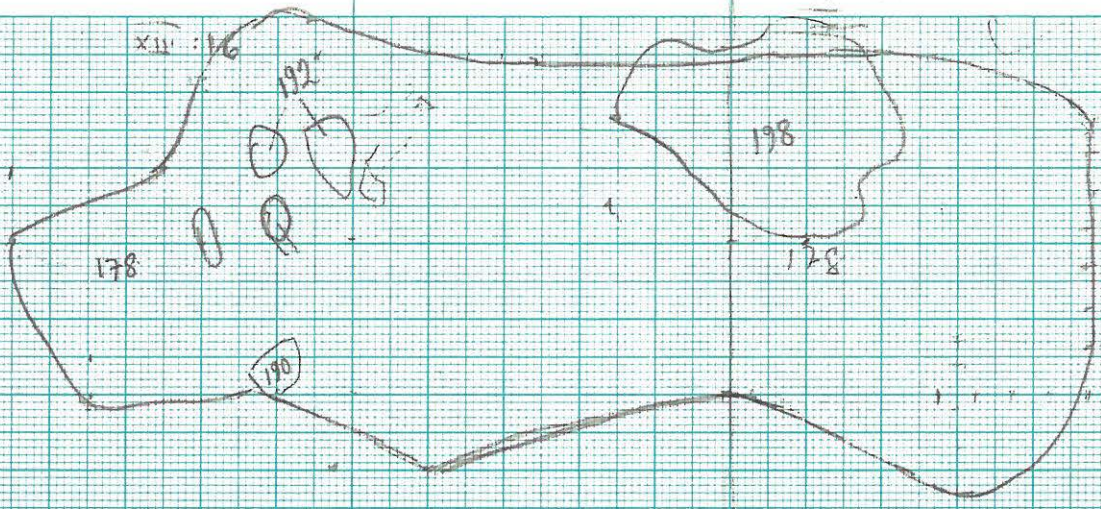
XIII: 15

XIV: 15

XII: 16

XII: 16

Handwritten scribbles

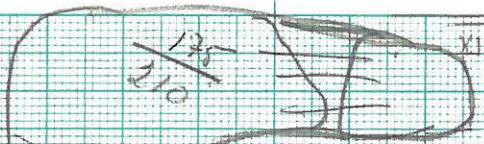


Kotemist
Vallila
Pirya

XI : 15

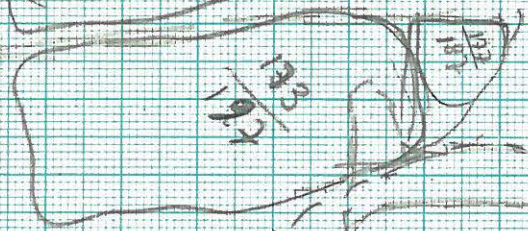
XII : 15

XIII : 15



XI : 16

XII : 16



181

175

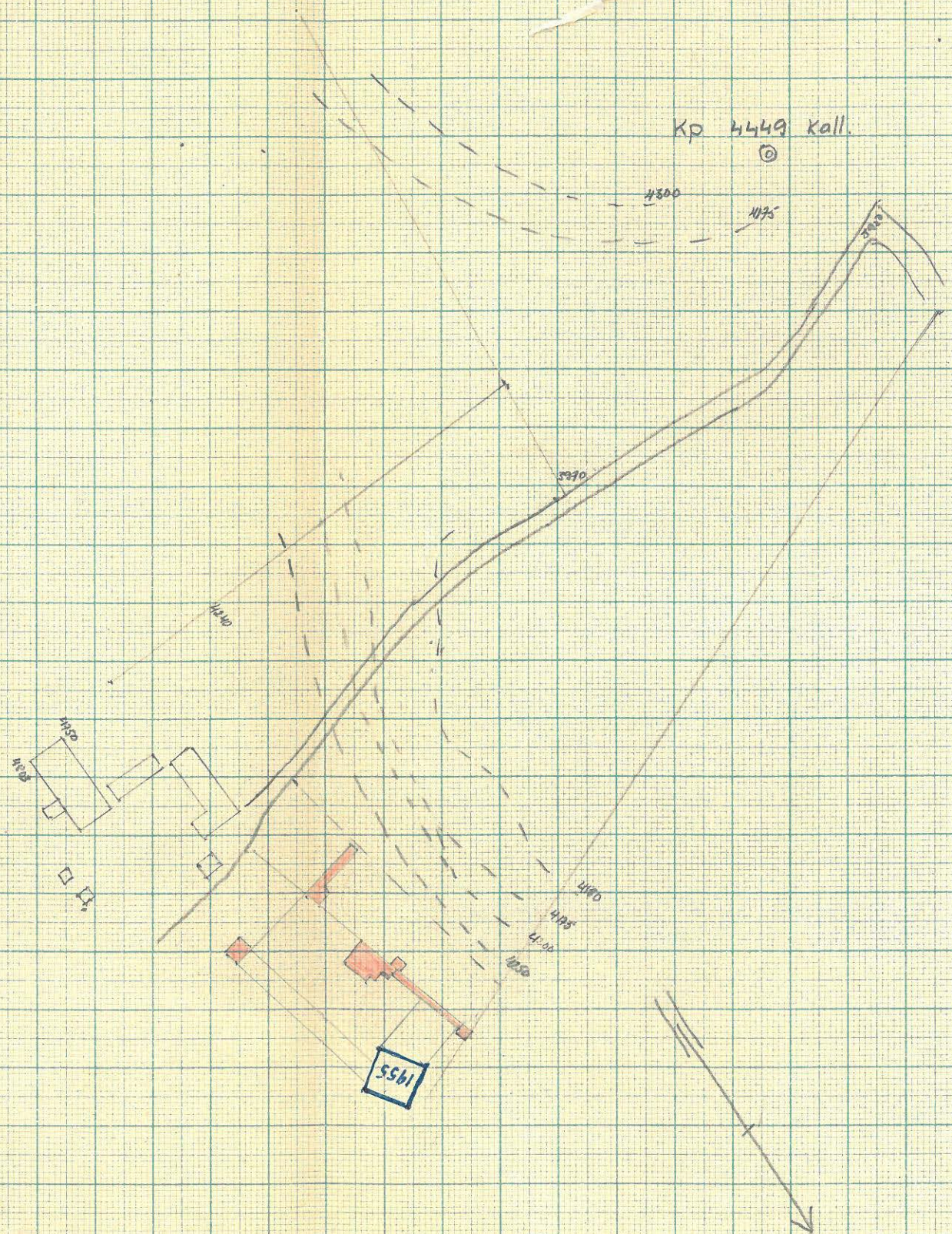
p (188)



1000 No 7
(179)

Kotomäki
Vallila
Pajua

PISPANTILA
KOKEMÄKI
WALLILANKYLÄ



MITTA KAAVA 1:2000

V. LUHO 1960
PIIRI J. EENILÄ

$\frac{175}{210}$

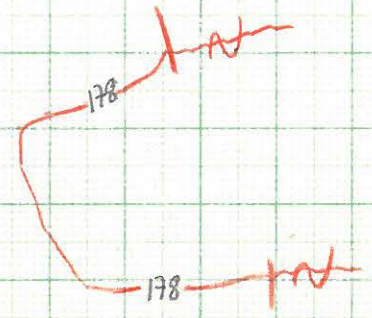
$\frac{173}{197}$

$\frac{177}{187}$



$\frac{XI:15}{XI:16}$ $\frac{XII:15}{XII:16}$

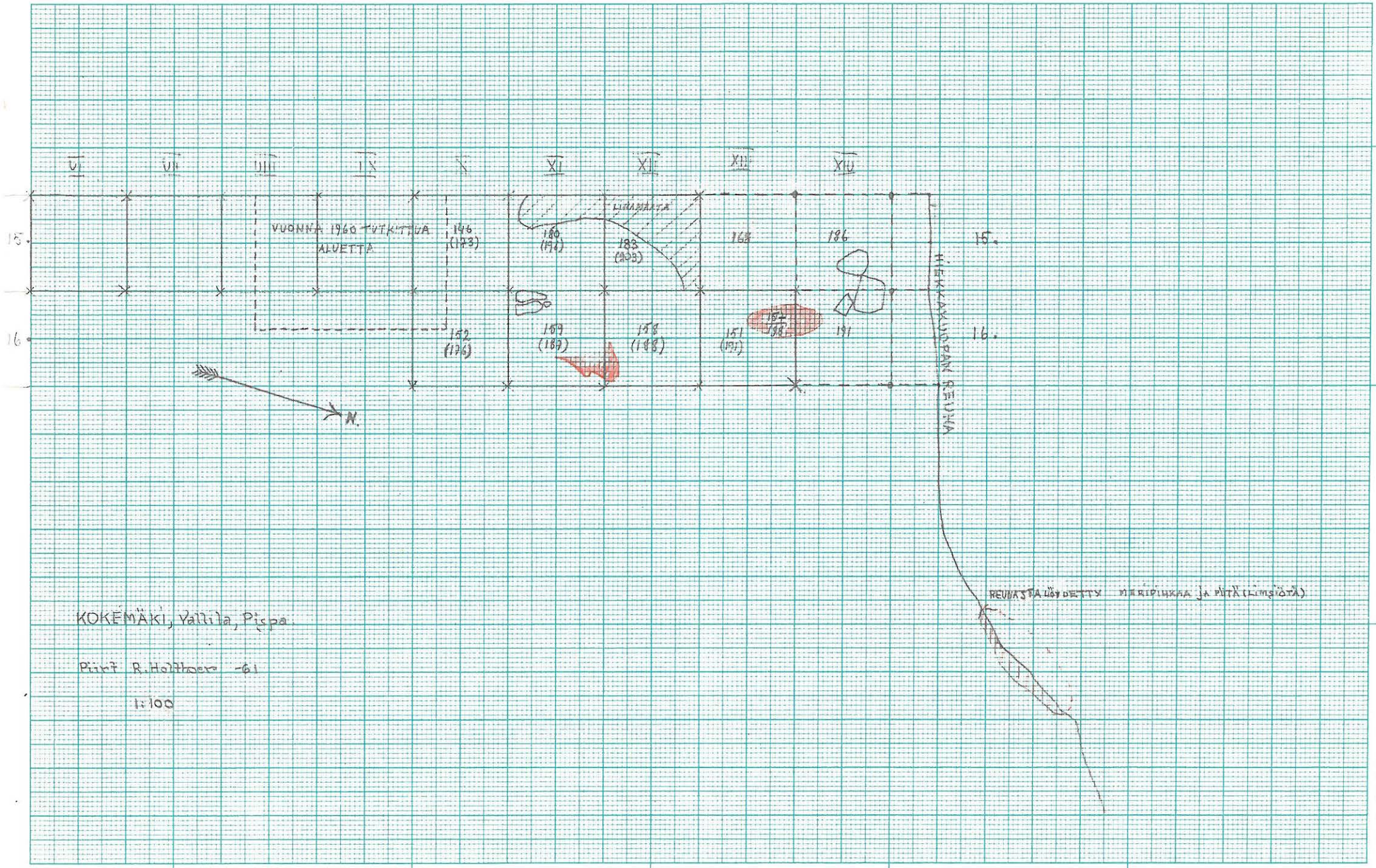
$\frac{XIII:15}{XIII:16}$



KOKEMÄKI, VALLILA, Piipa

Piiri. R. Holthoers -61

1:20



KOKEMÄKI, Vallila, Pispala

Piirri R. Hiltunen -61

1:100

Oy Vuori Ab No 1131 A 3 297 X 420 mm

