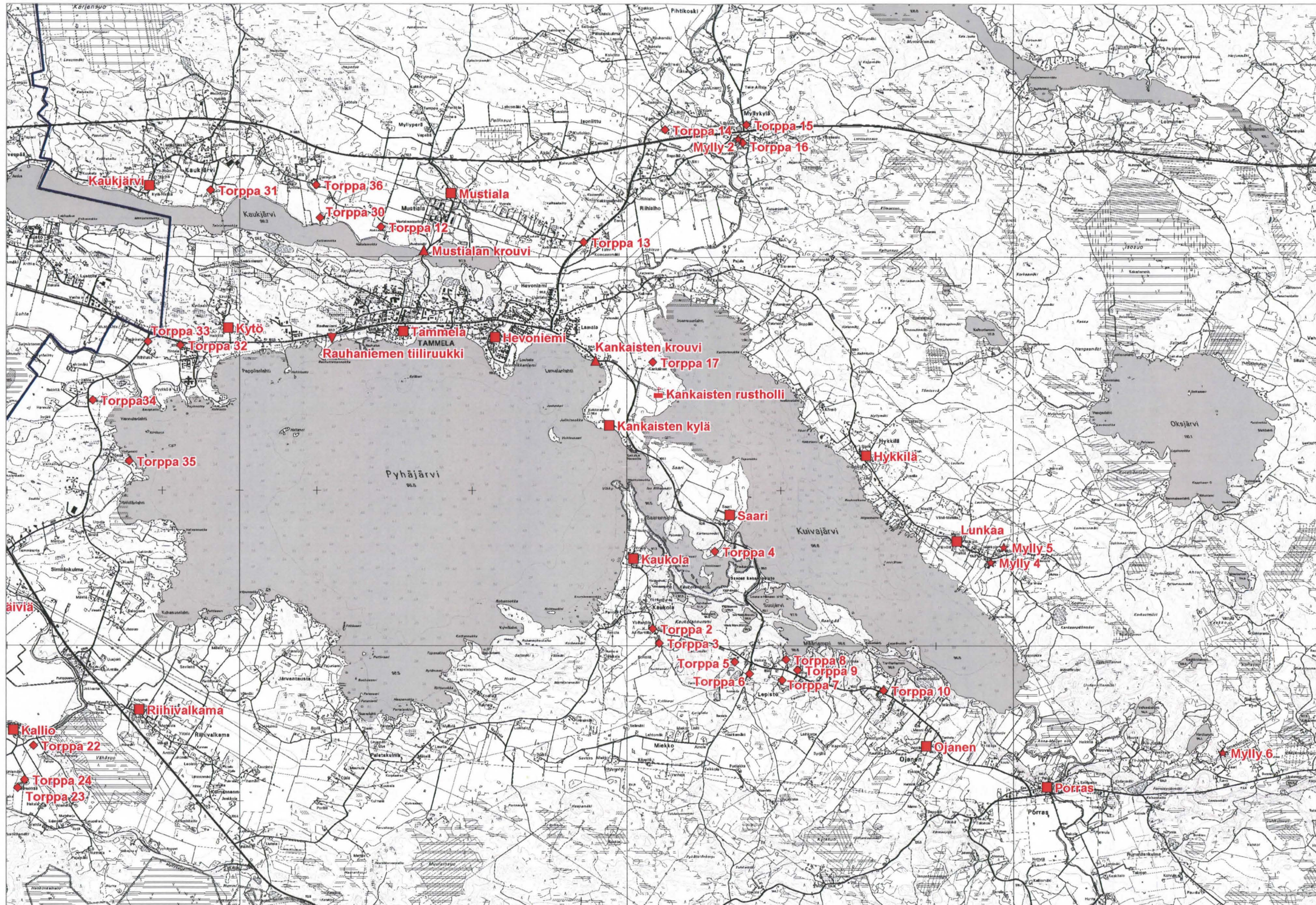
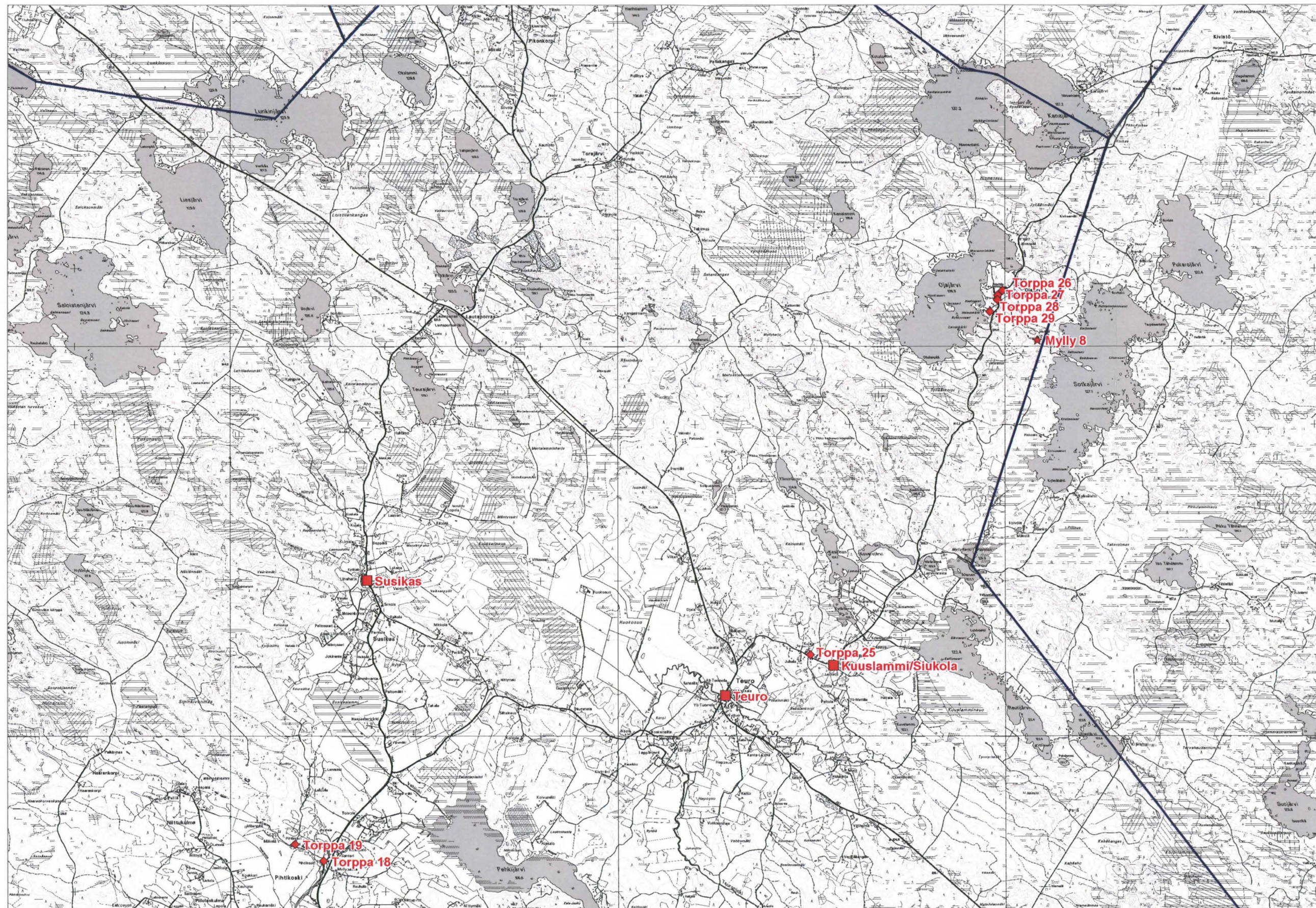




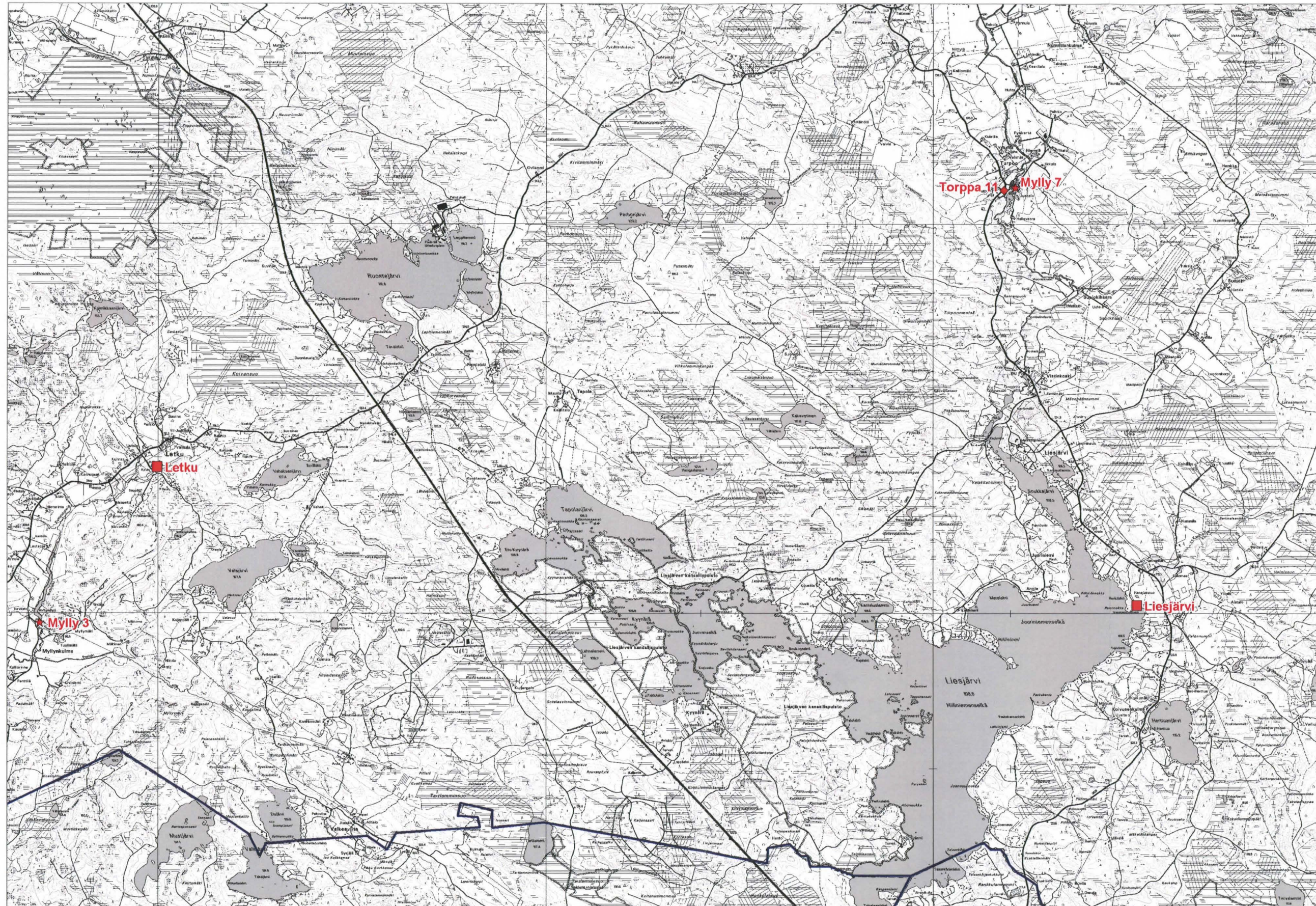
Kartta 1. Tammelän länsiosassa v. 2005 inventoinnissa tarkastetut kohteet: 8 kyläpaikkaa, 6 torpanpaikkaa ja 2 myllynpaikkaa. Mk 1:50 000, Pk 2113 04, 2113 07, 2024 05, 2024 06, 2024 08 ja 2024 09 (PerusCD 2004/Museovirasto).



Kartta 2. Tammelän keskiosassa v. 2005 inventoinnissa tarkastetut kohteet: 14 kyläpaikkaa, 25 torpanpaikkaa, 4 myllypaikkaa, 2 krouvia, tiiliruukki ja rustholli.. Mk 1:50 000, Pk 2113 07, 2113 10, 2024 09 ja 2024 12 (PerusCD 2004/Museovirasto).



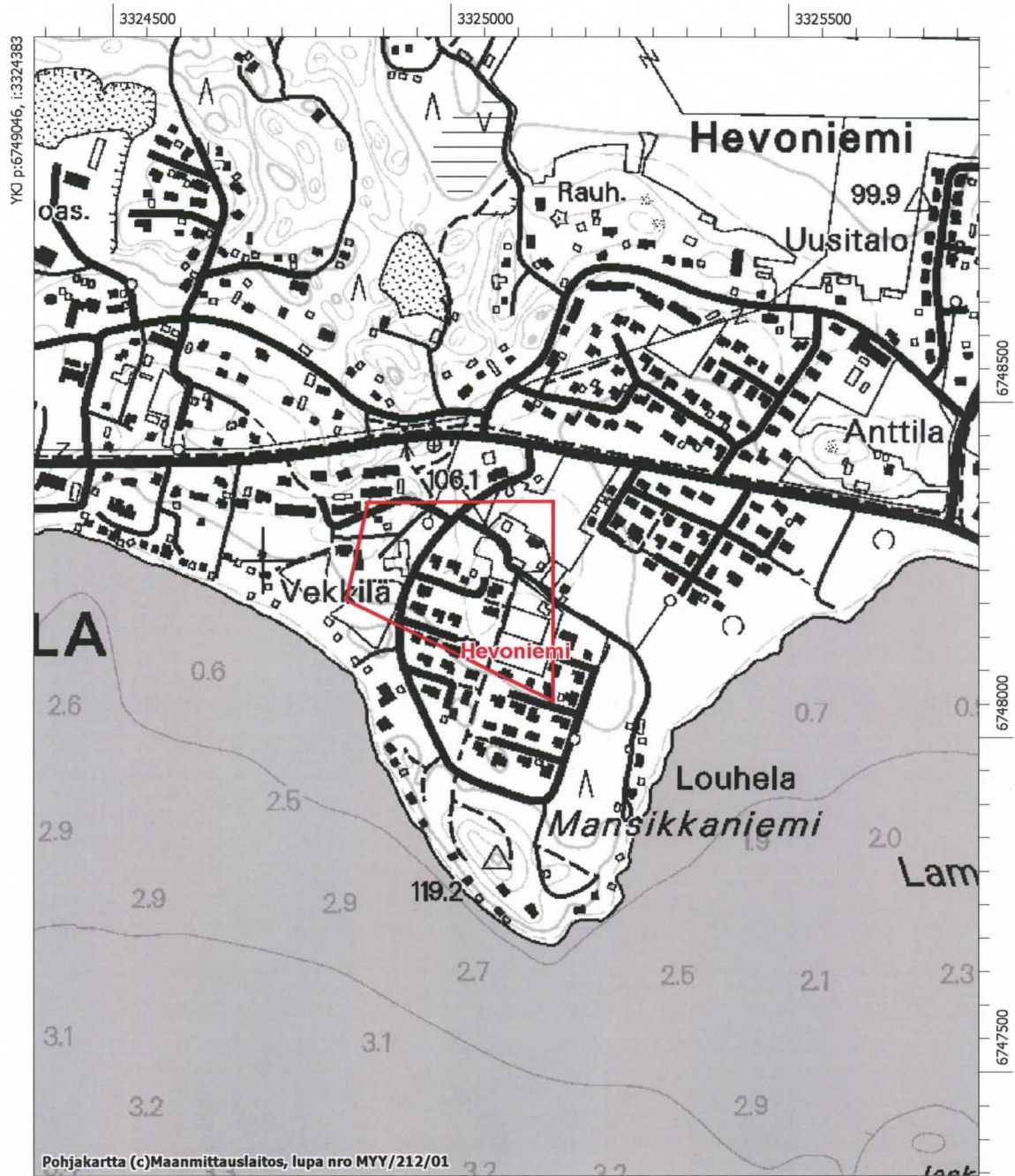
Kartta 3. Tammelän pohjoisosassa v. 2005 inventoinnissa tarkastetut kohteet: 3 kyläpaikkaa, 7 torpanpaikkaa ja 1 myllynpaikka. Mk 1:50 000, Pk 2113 07, 2113 08, 2113 10, 2113 11, 2131 01, 2131 02 (PerusCD 2004/Museovirasto).



Kartta 4. Tammelän eteläosassa v. 2005 inventoinnissa tarkastetut kohteet: 2 kyläpaikkaa, 1 torppanpaikka ja 2 myllynpaikkaa. Mk 1:50 000, Pk 2024 08, 2024 09, 2024 11, 2024 12 (PerusCD 2004/Museovirasto).

Tammela Hevoniemi (Heffuoniemi/Häfvoniemi)

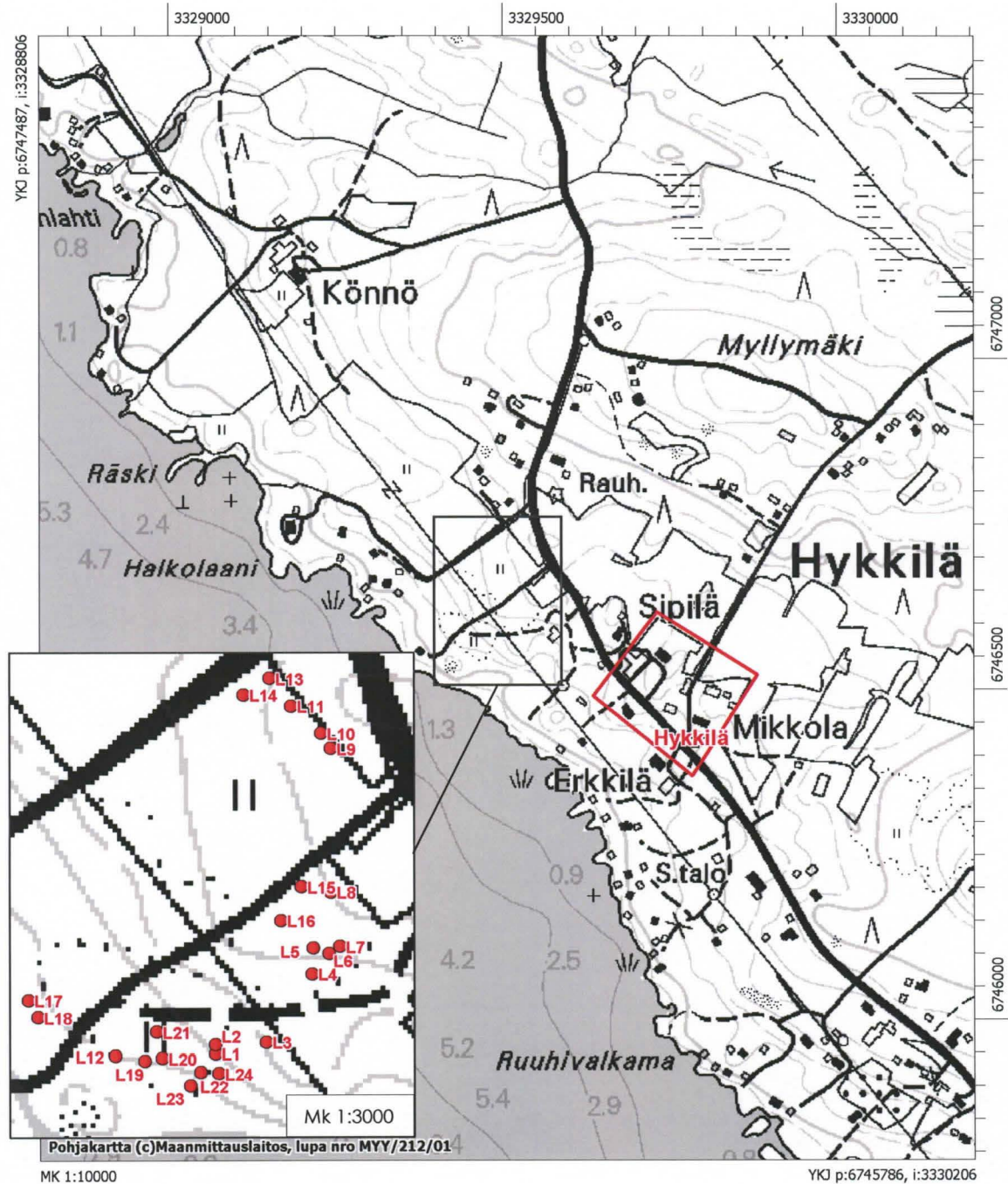
Pk 2113 07



Tammela Hykkilä (Hijckilä/Hyckyla)

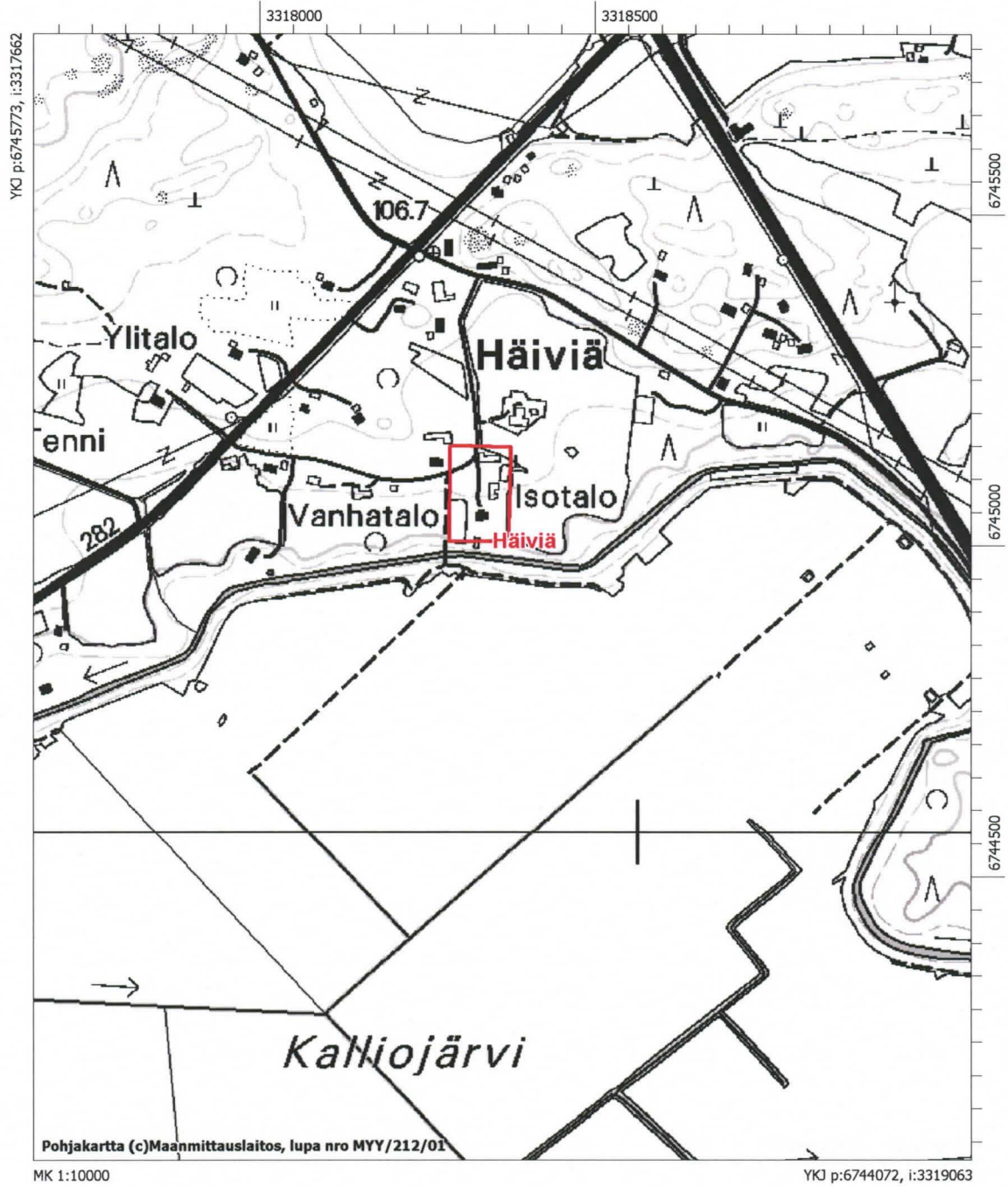
Alakohteet: Latomukset 1–24

Pk 2113 10



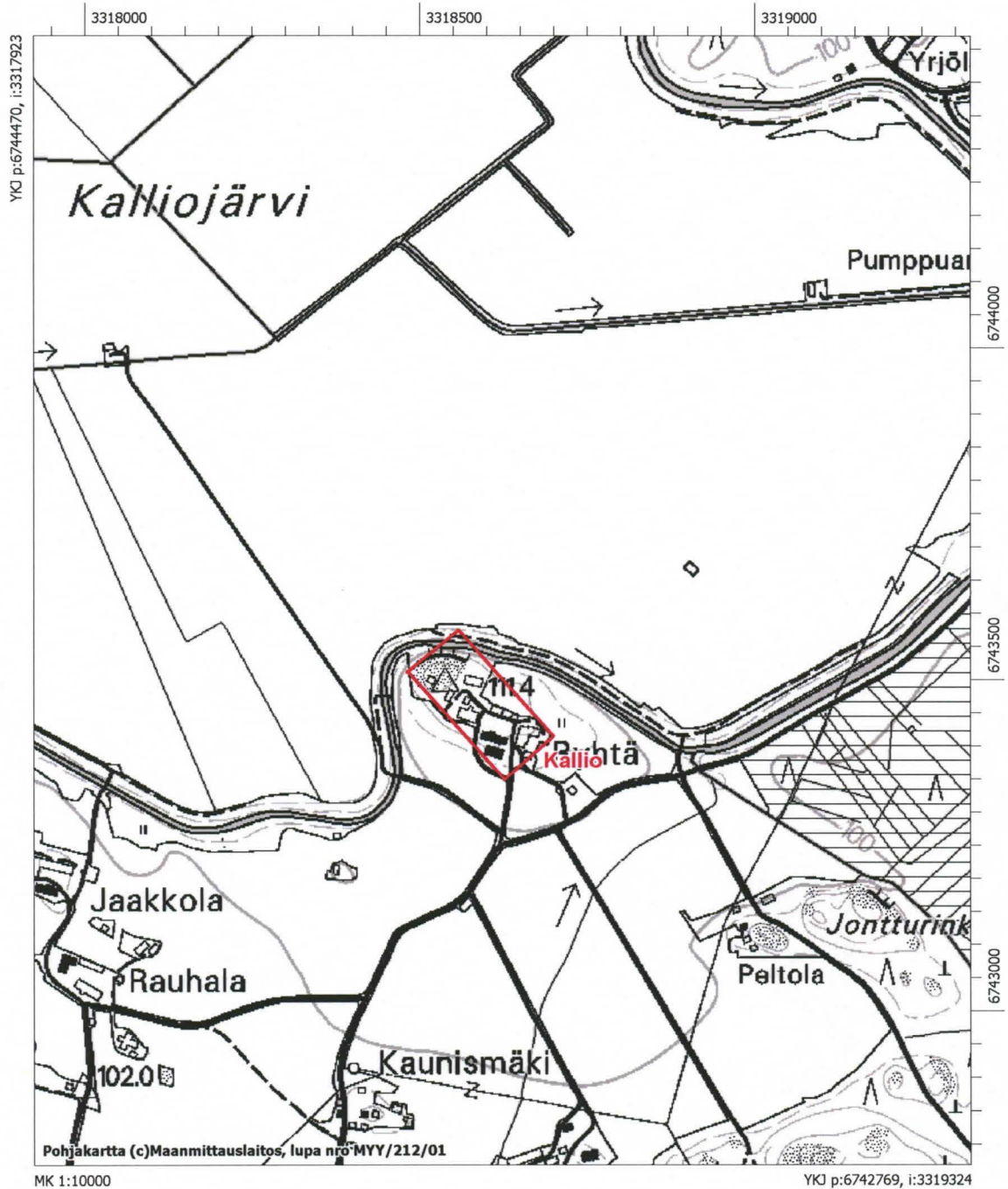
Tammela Häiviä (Häifwiä/Häiwiö)

Pk 2113 07



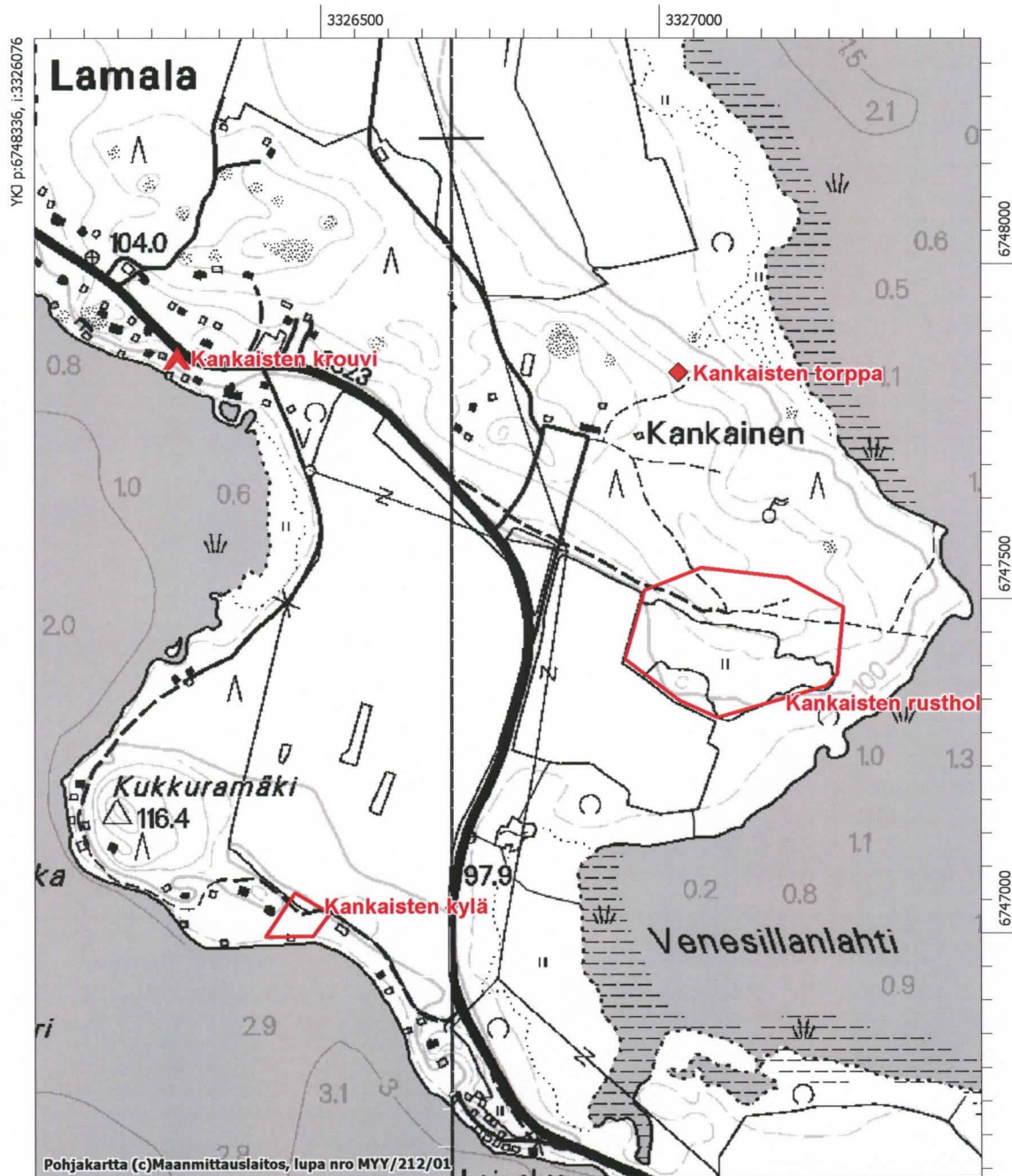
Tammela Kallionkylä (Callio)

Pk 2024 09



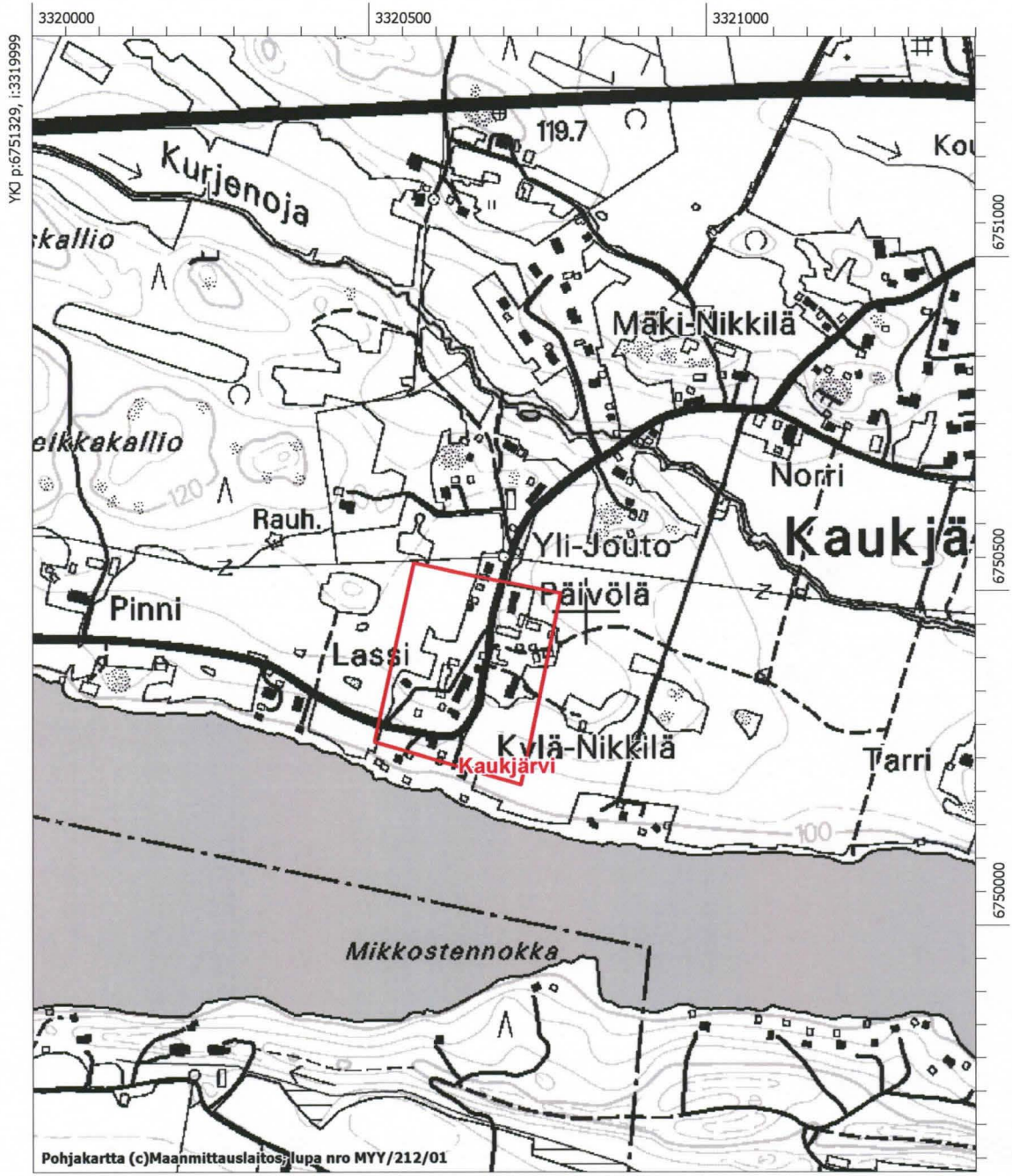
Tammela Kankainen (Kankas/Kangais)
Kankaisten krouvi
Kankaisten rustholli
Kankaisten torppa

Pk 2113 07



Tammela Kaukjärvi (Kaukaierffui)

PK 2113 07

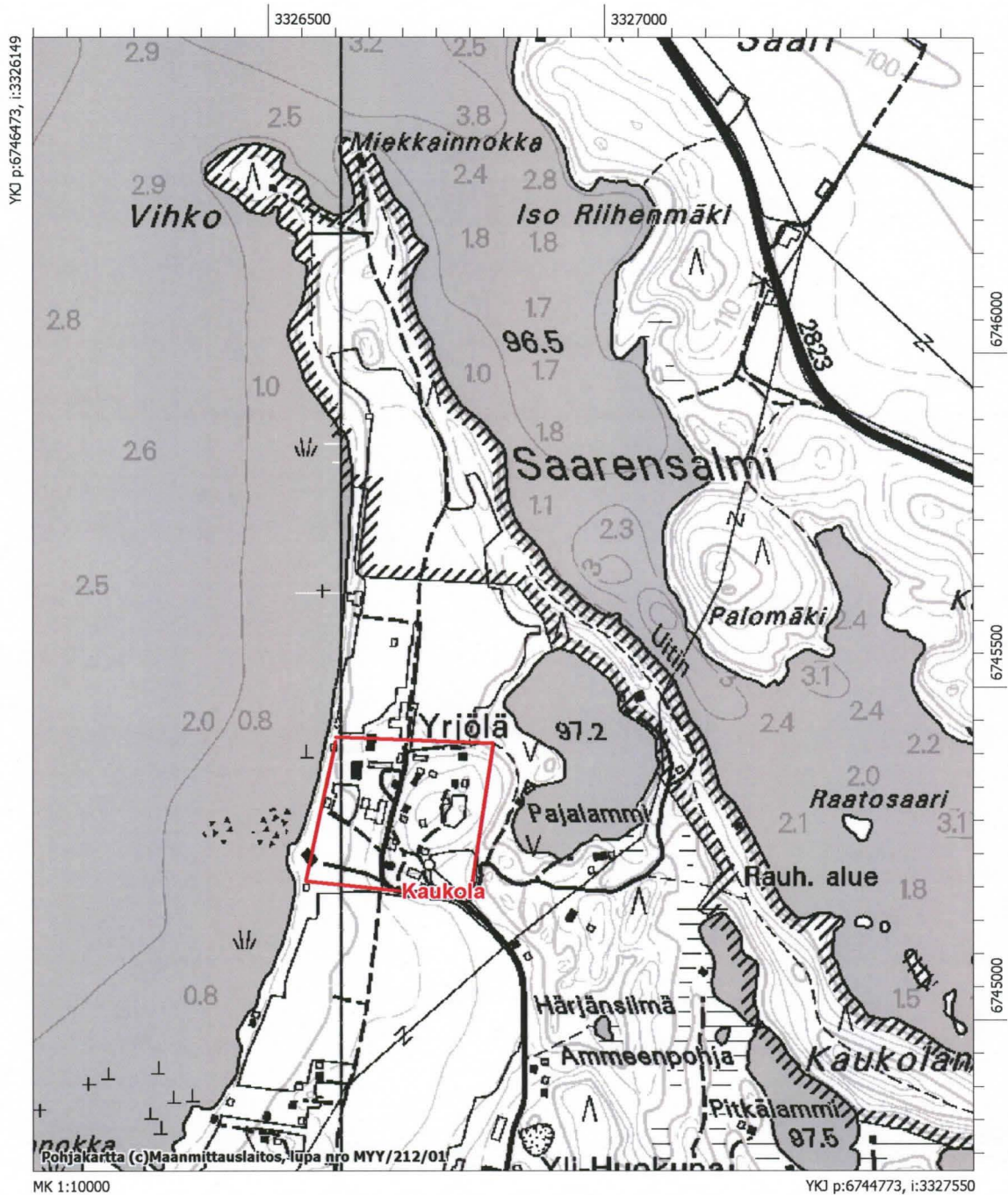


MK 1:10000

YKJ p:6749629, i:3321399

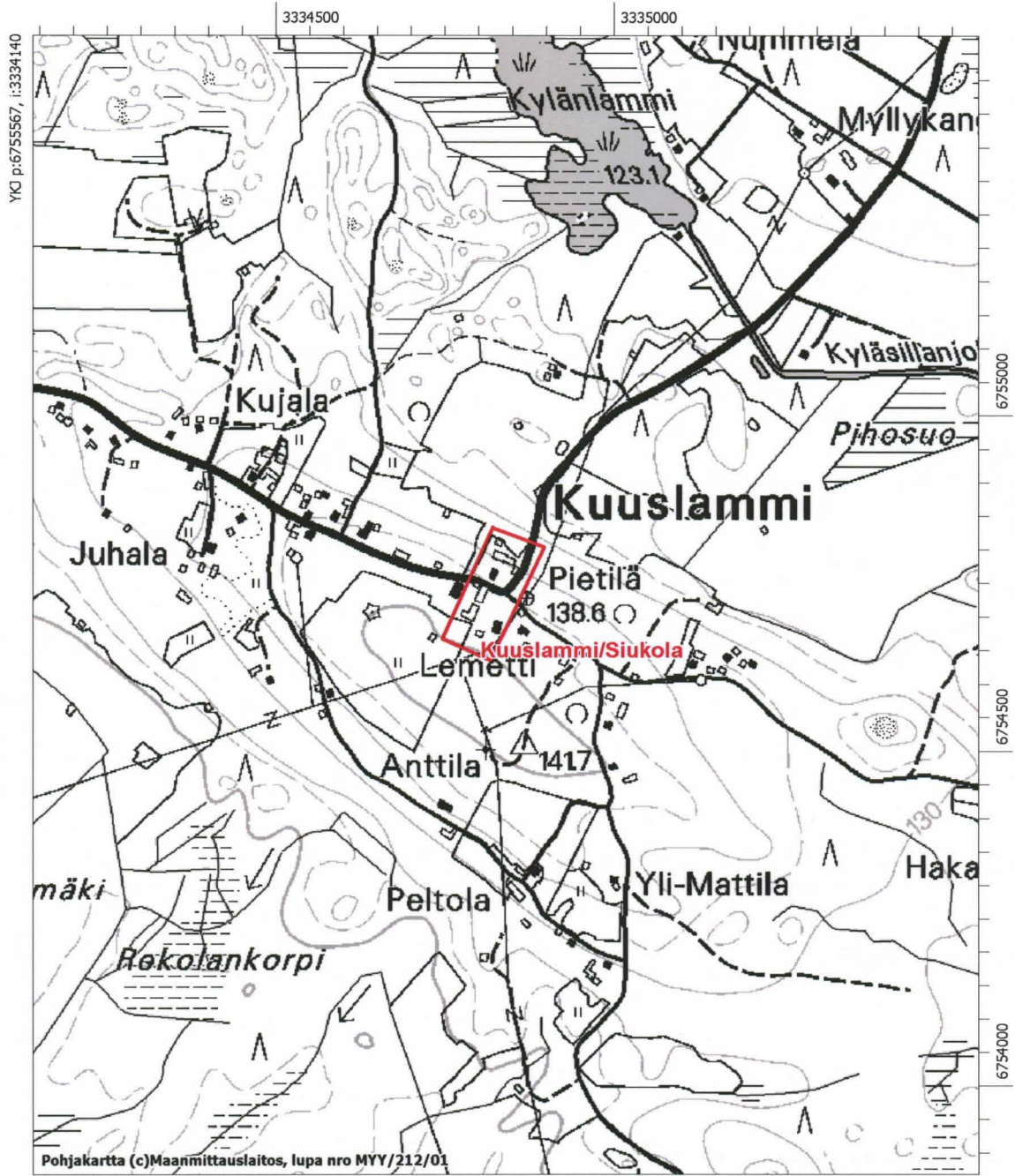
Tammela Kaukola (Kaukoyla)

Pk 2113 07



Tammela Kuuslammi/Siukola (Kuslampi)

Pk 2113 11

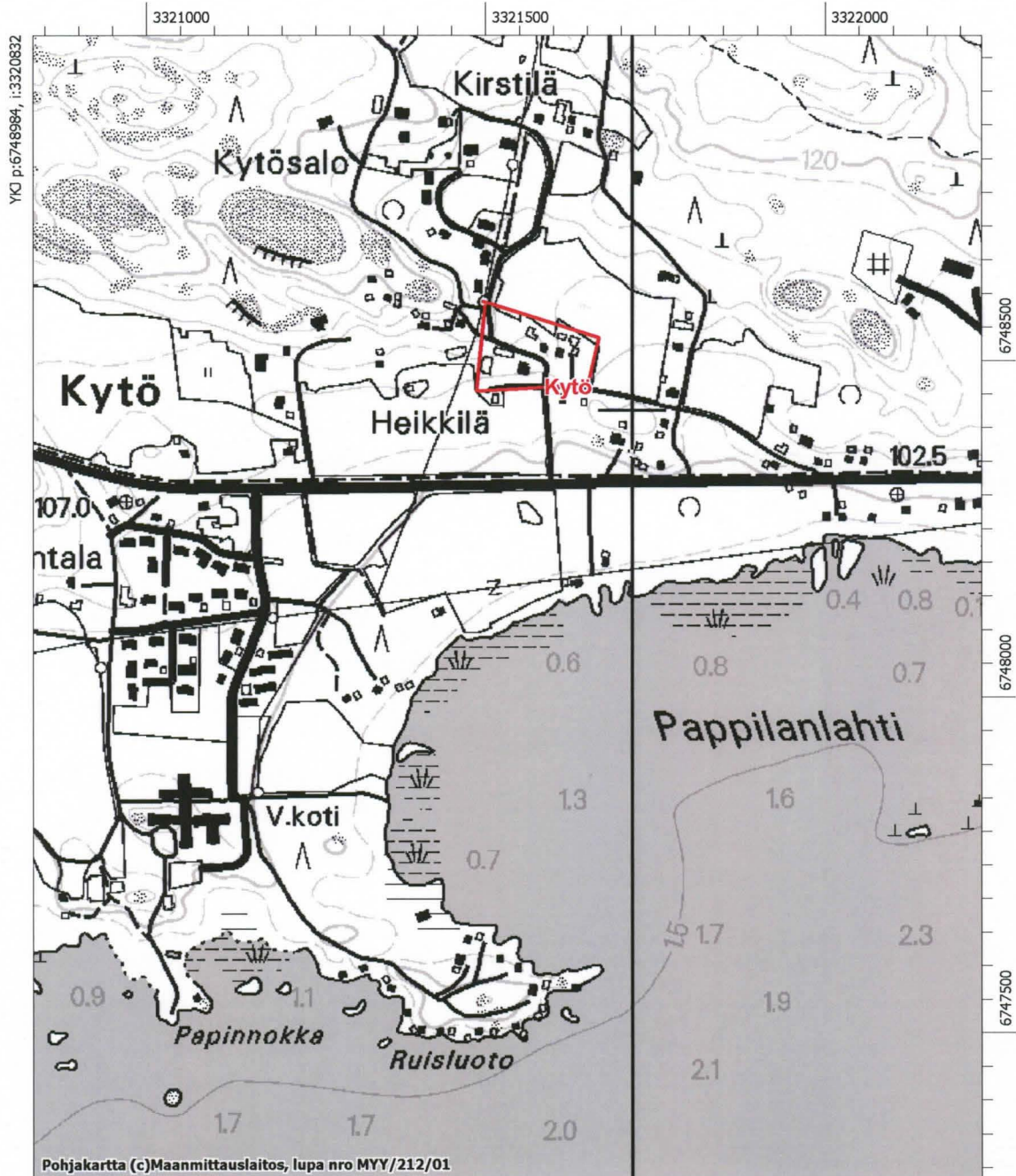


MK 1:10000

YKJ p:6753866, i:3335540

Tammela Kytö (Kijdest/Kydes)

Pk 2113 07

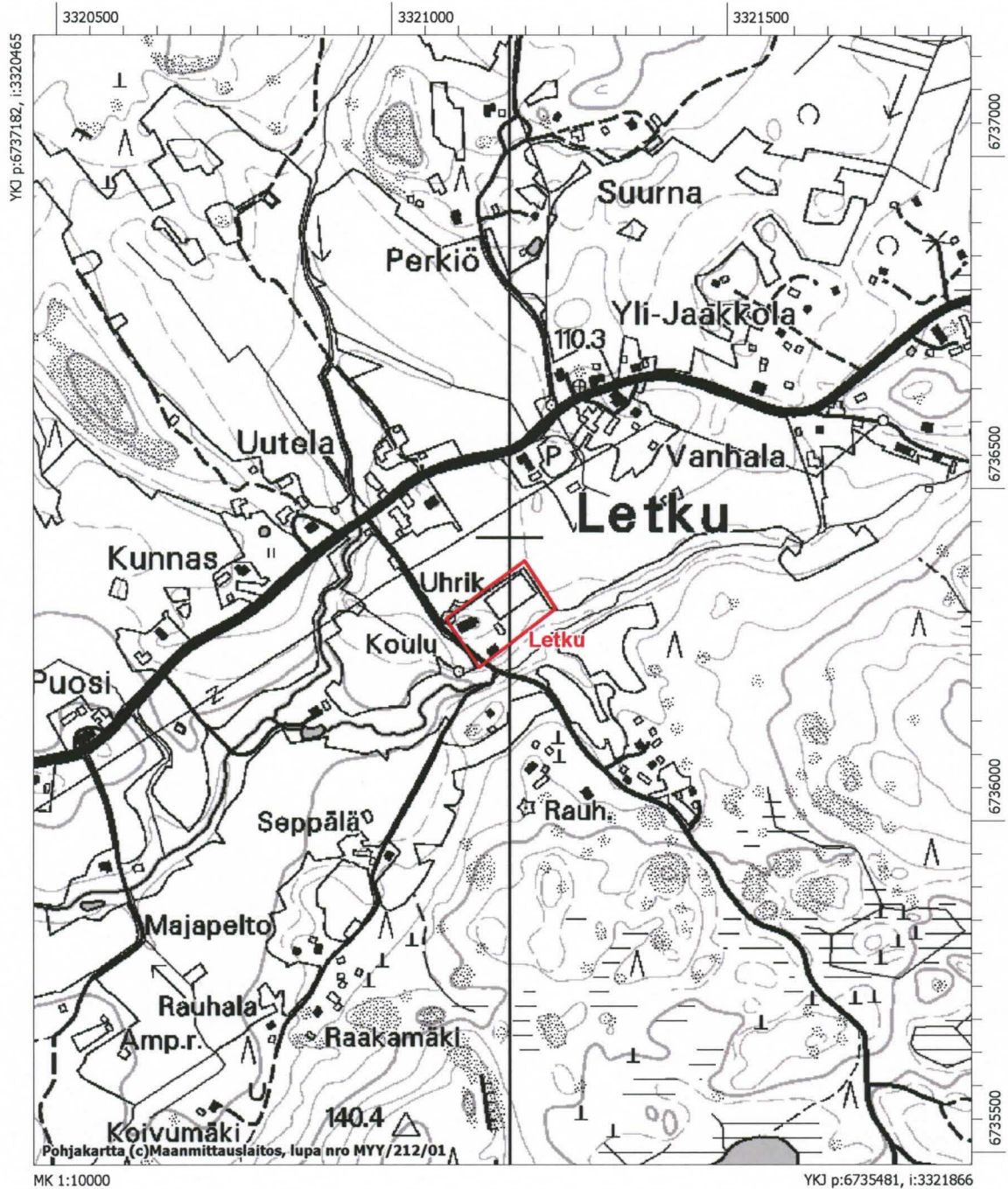


MK 1:10000

YKJ p:6747283, i:3322232

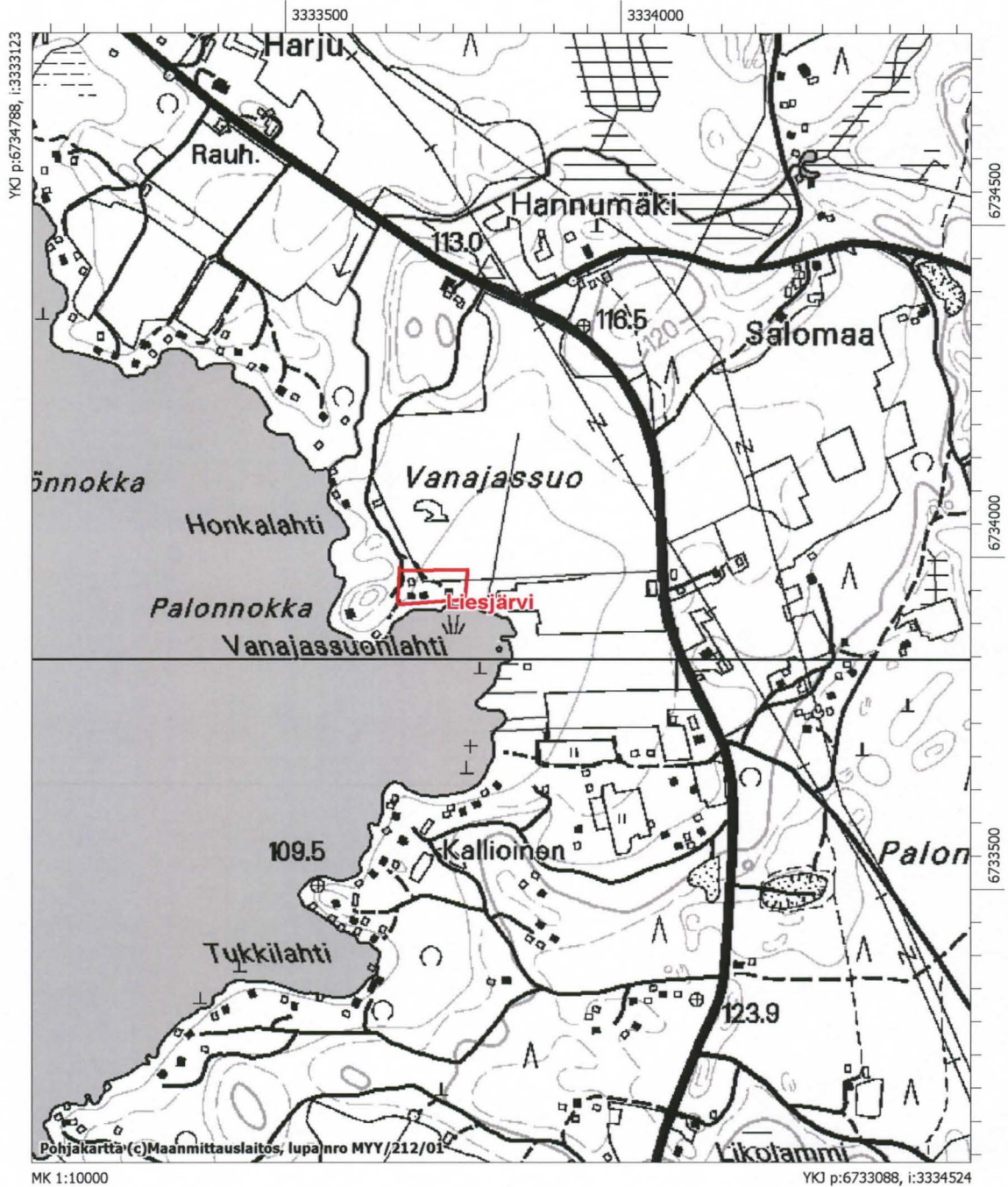
Tammela Letku (Ledku)

Pk 2024 09



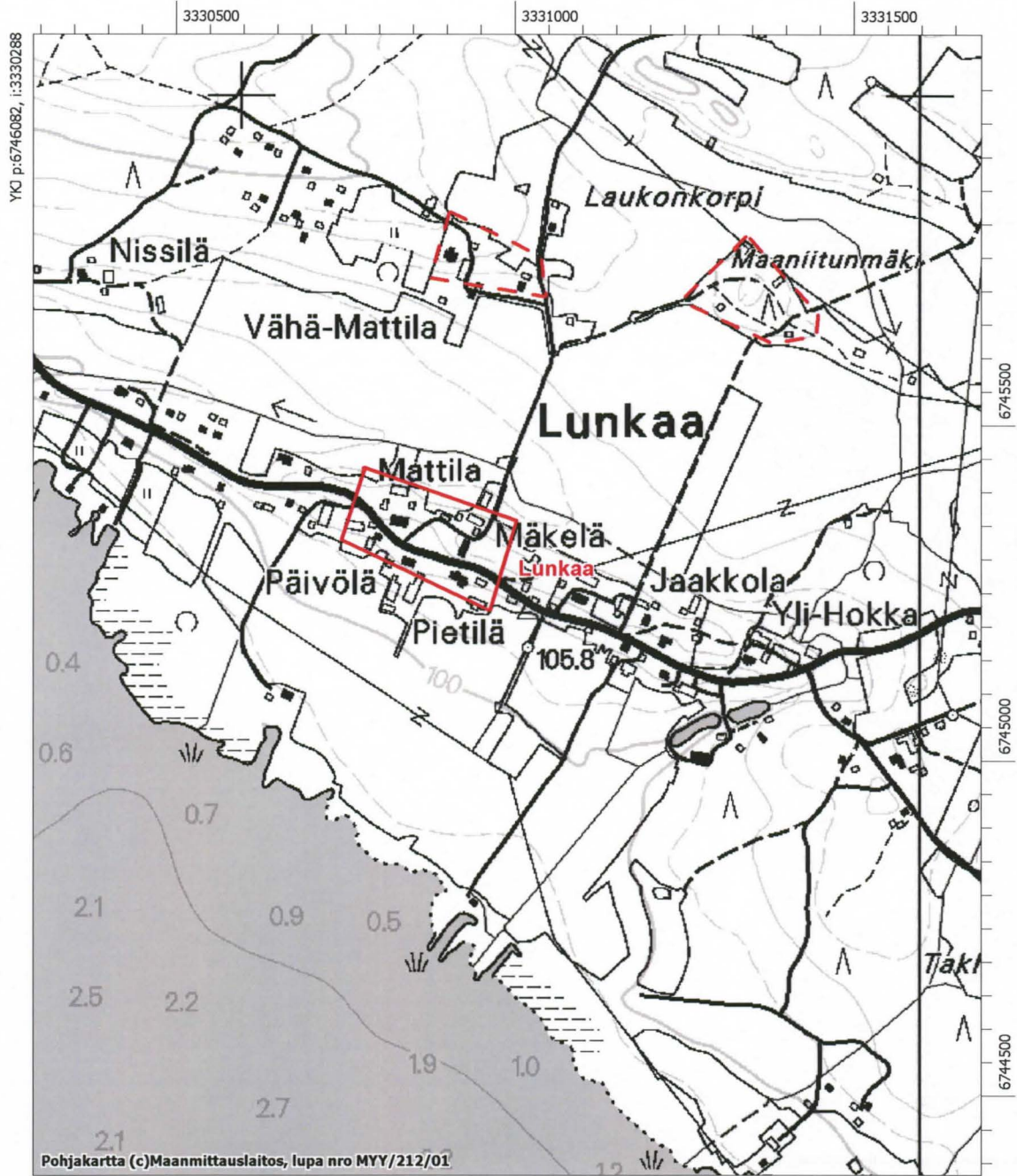
Tammela Liesjärvi (Liesjarffi)

Pk 2024 11



Tammela Lunkaa (Lungas)

Pk 2113 10



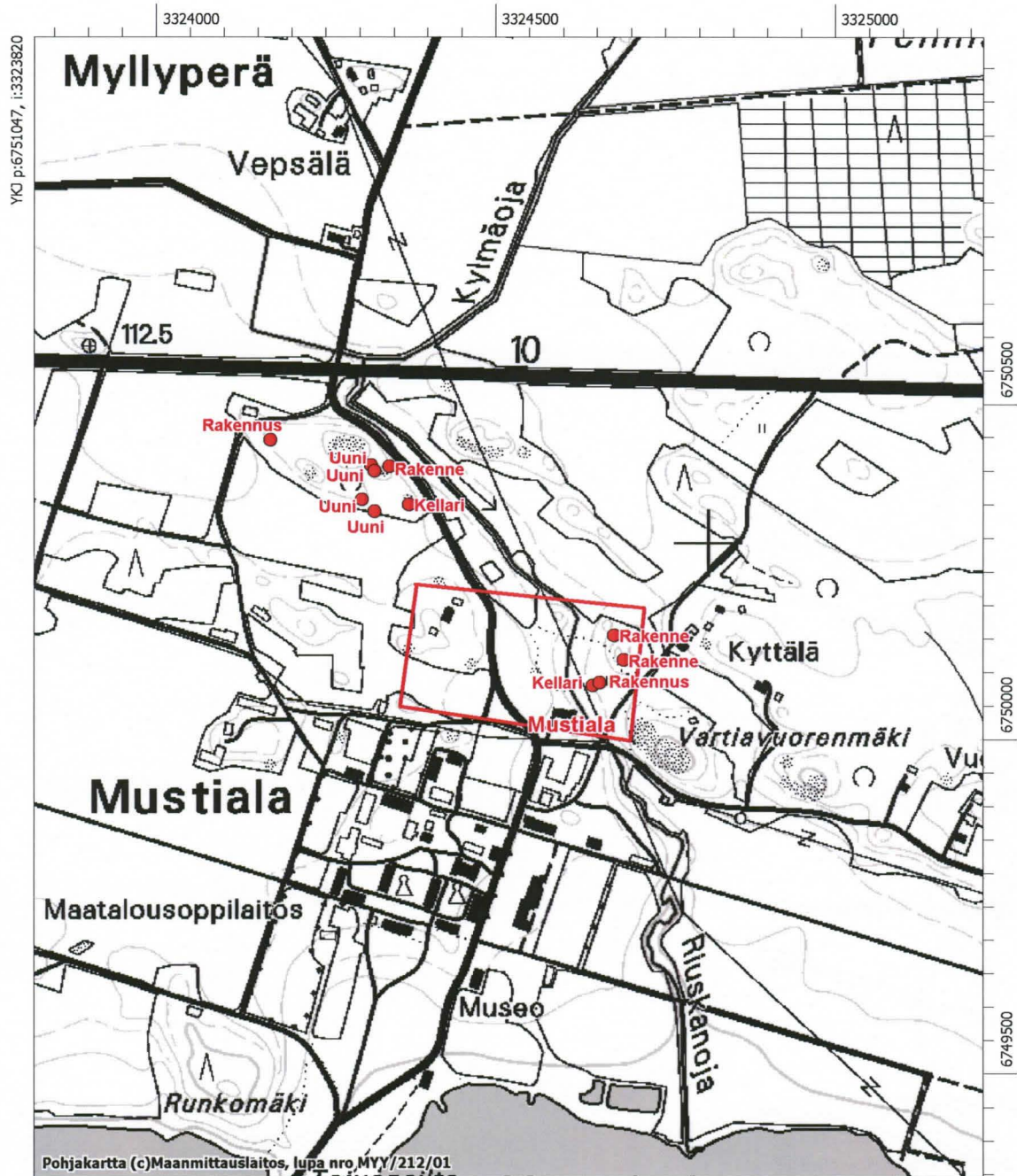
MK 1:10000

YKJ p:6744381, i:3331689

Tammela Mustiala (Mwstiala)

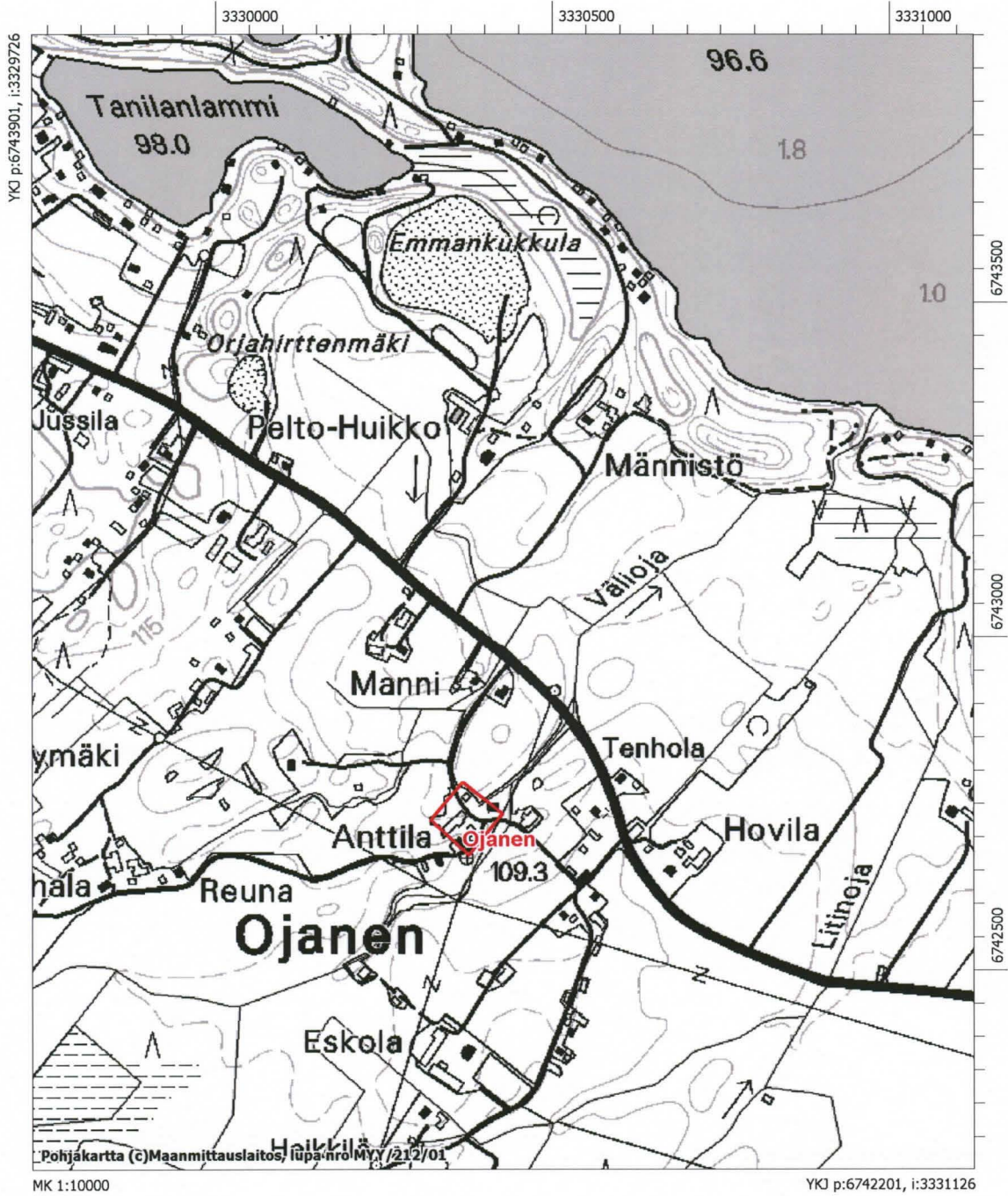
Alakohteet: 4 uunia, 2 kellaria, 2 rakennuksenpohjaa ja 3 tarkemmin määrittelemätöntä kivirakennetta

Pk 2113 07



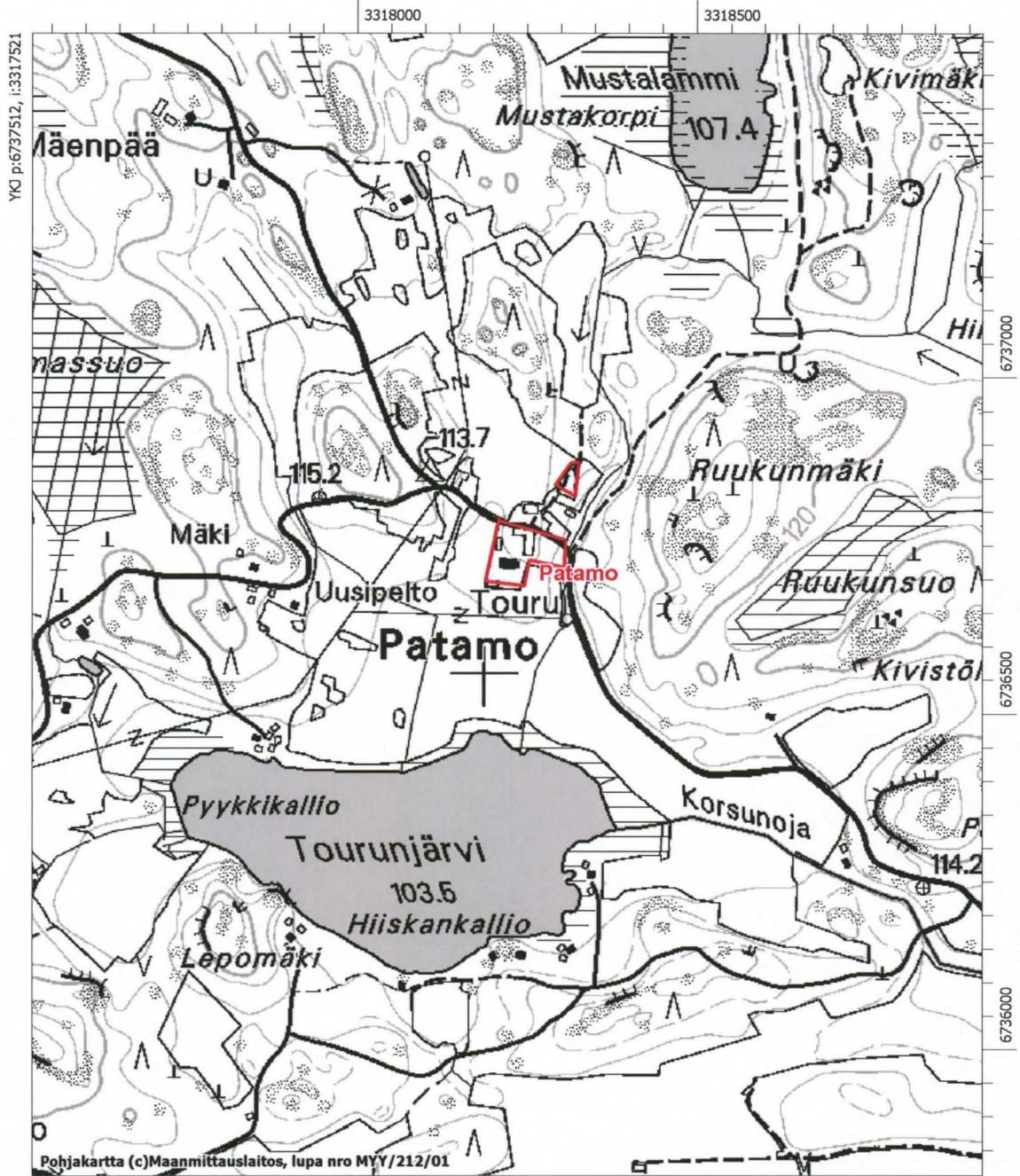
Tammela Ojanen (Ois/Oijas)

Pk 2024 12



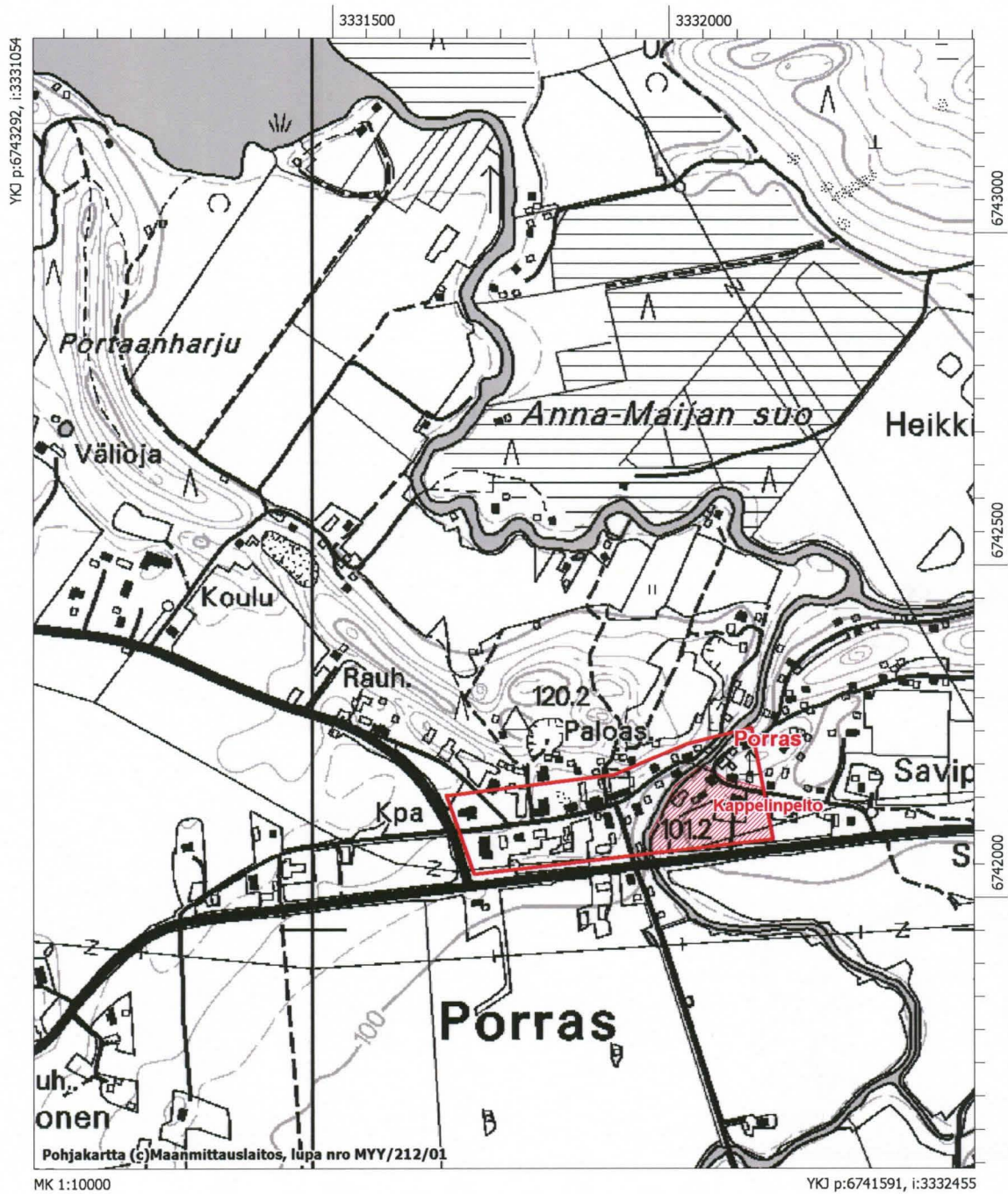
Tammela Patamo (Patama)

Pk 2024 09



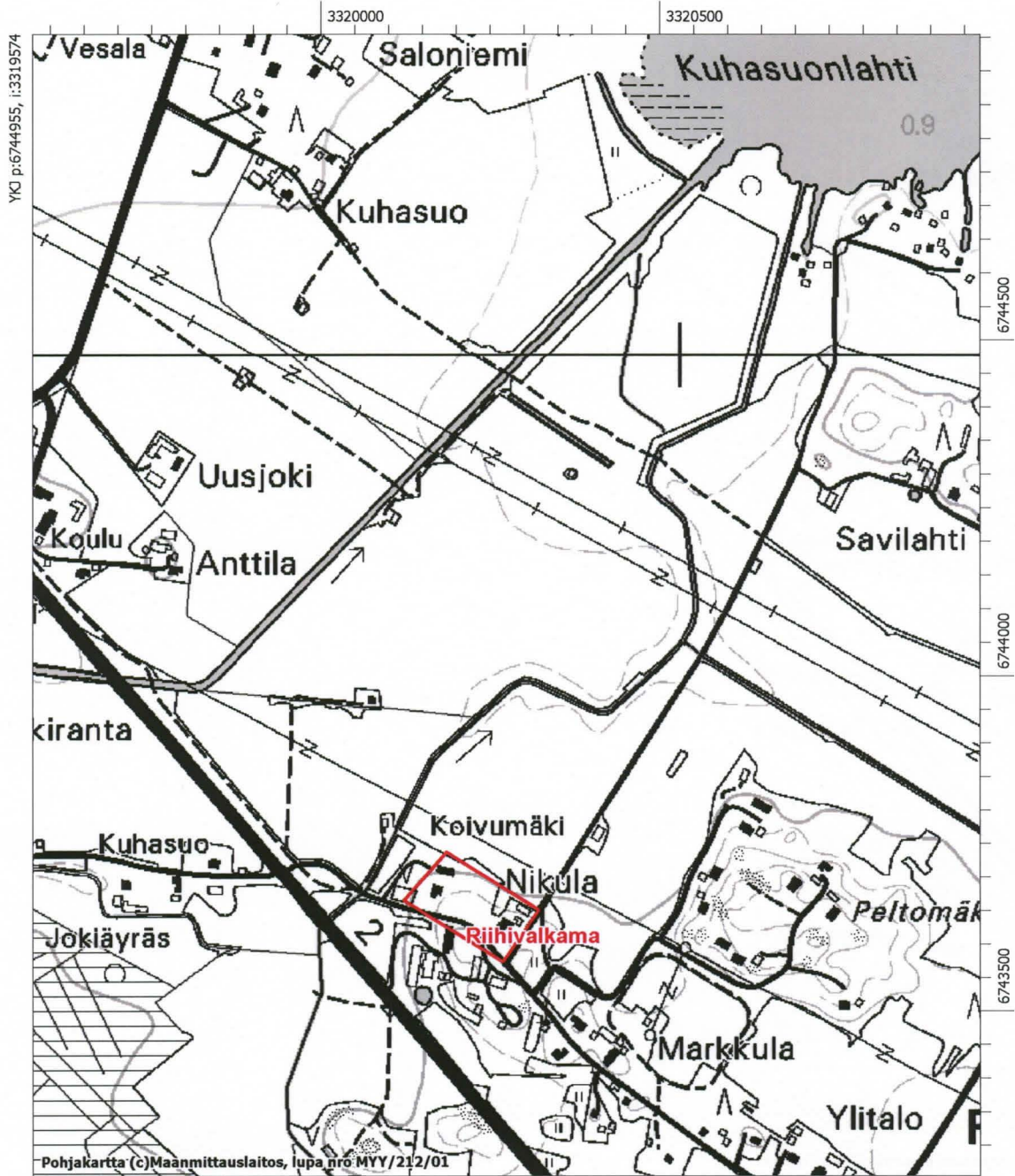
Tammela Porras (Portas)
Alakohde: Kappelinpelto

Pk 2024 12



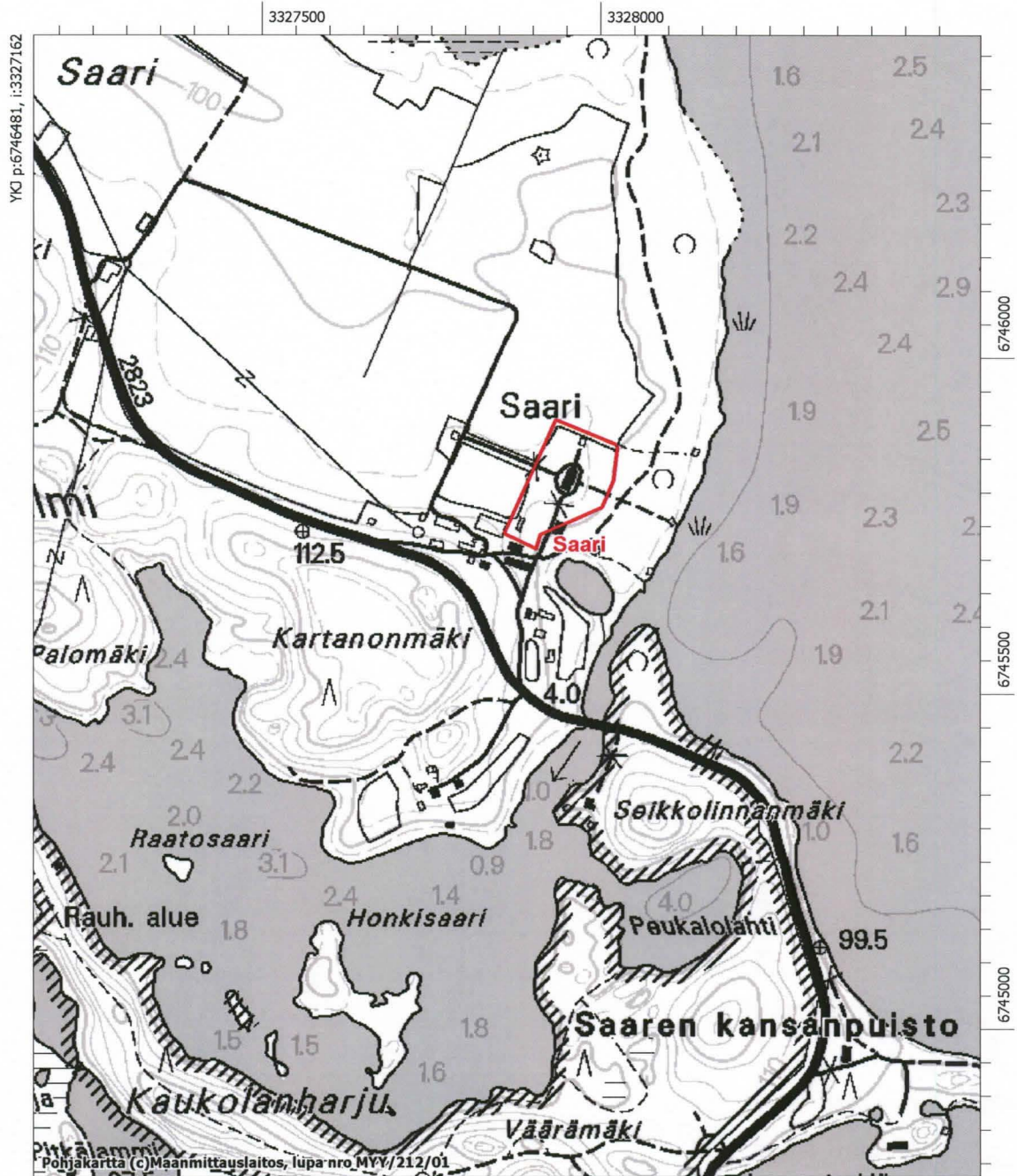
Tammela Riihivalkama (Riihivakkame)

Pk 2024 09



Tammela Saari (Saris)

Pk 2113 10

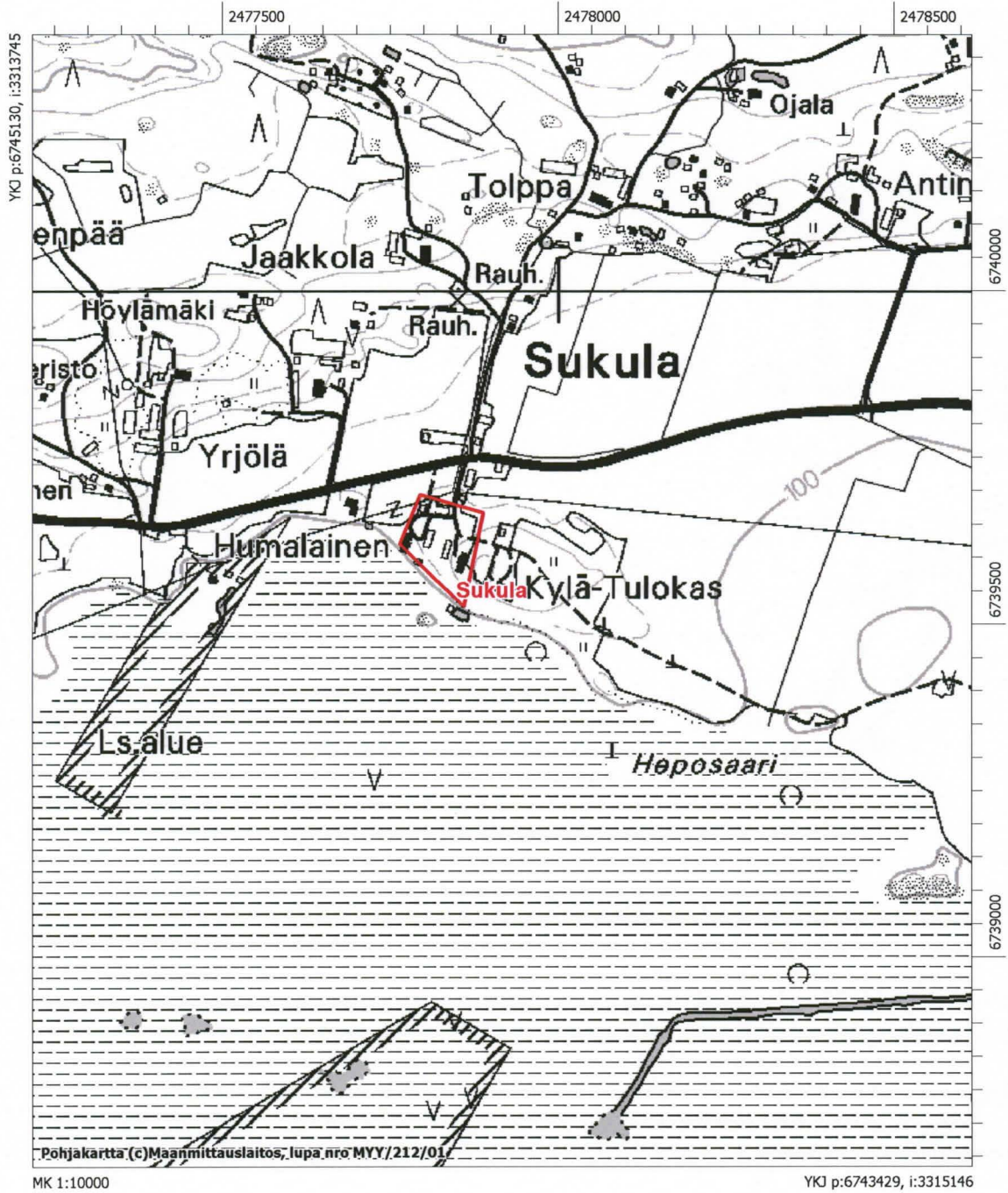


MK 1:10000

YKJ p:6744780, i:3328563

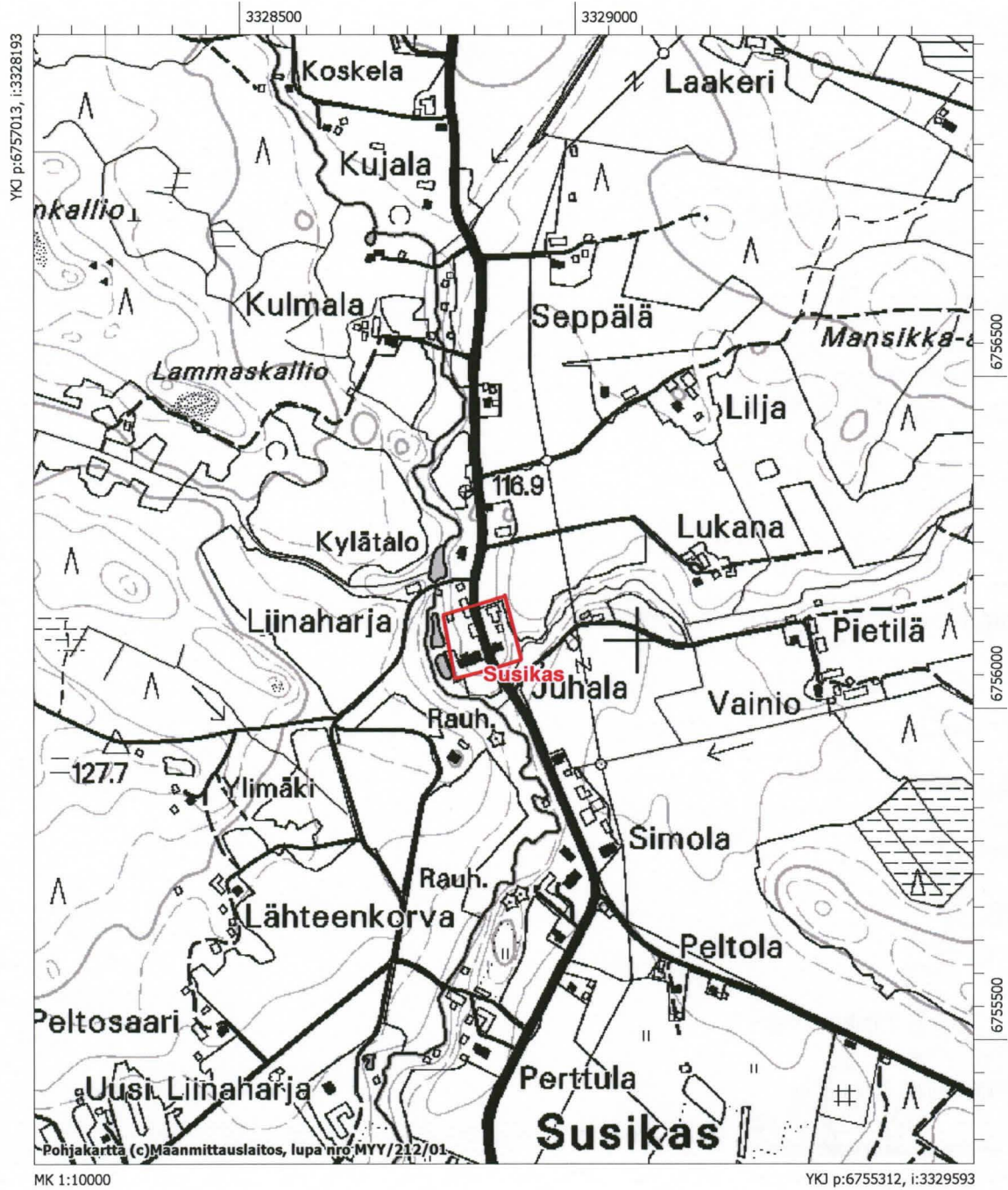
Tammela Sukula (Suckula)

Pk 2113 04



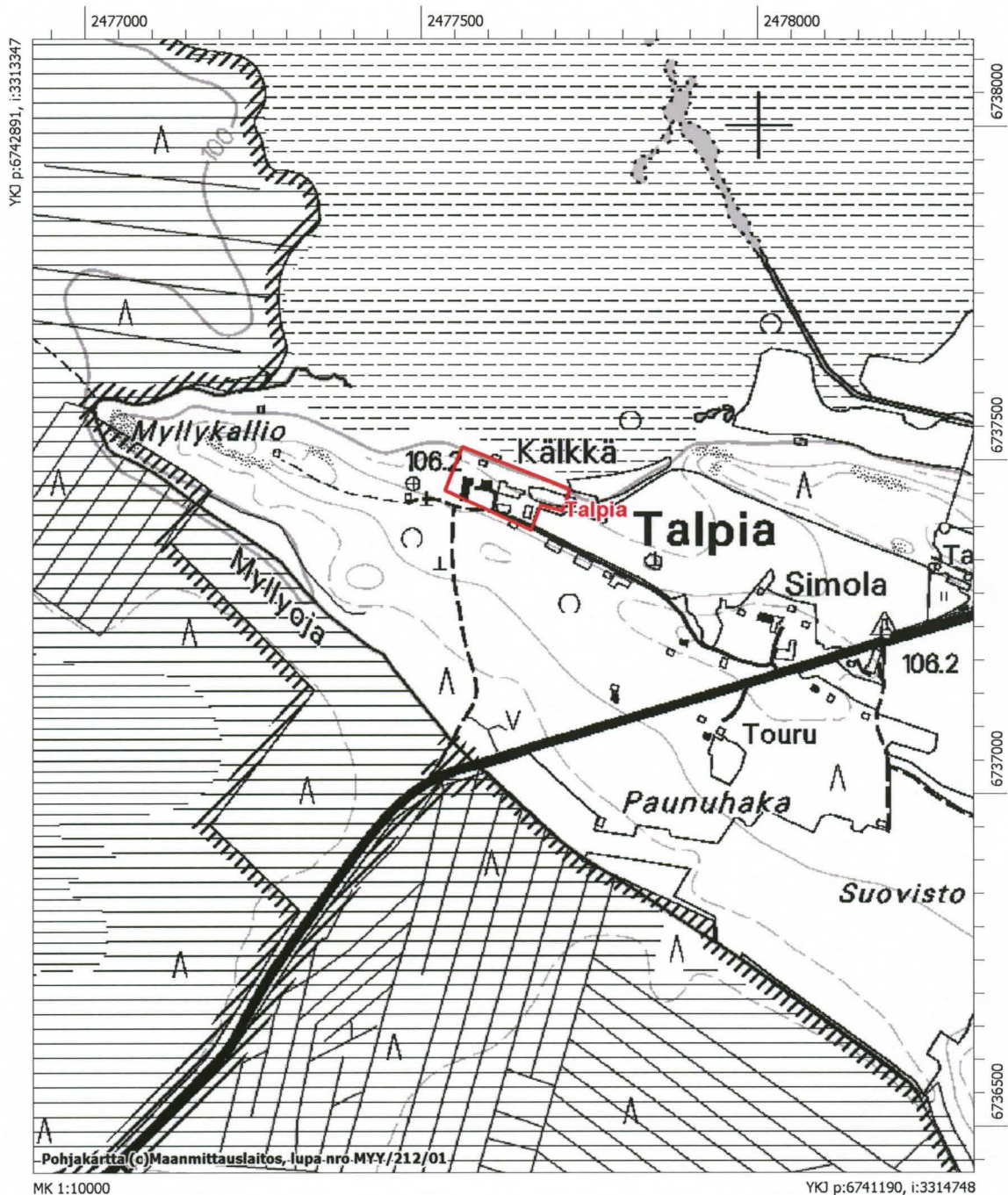
Tammela Susikas (Susickala)

Pk 2113 11



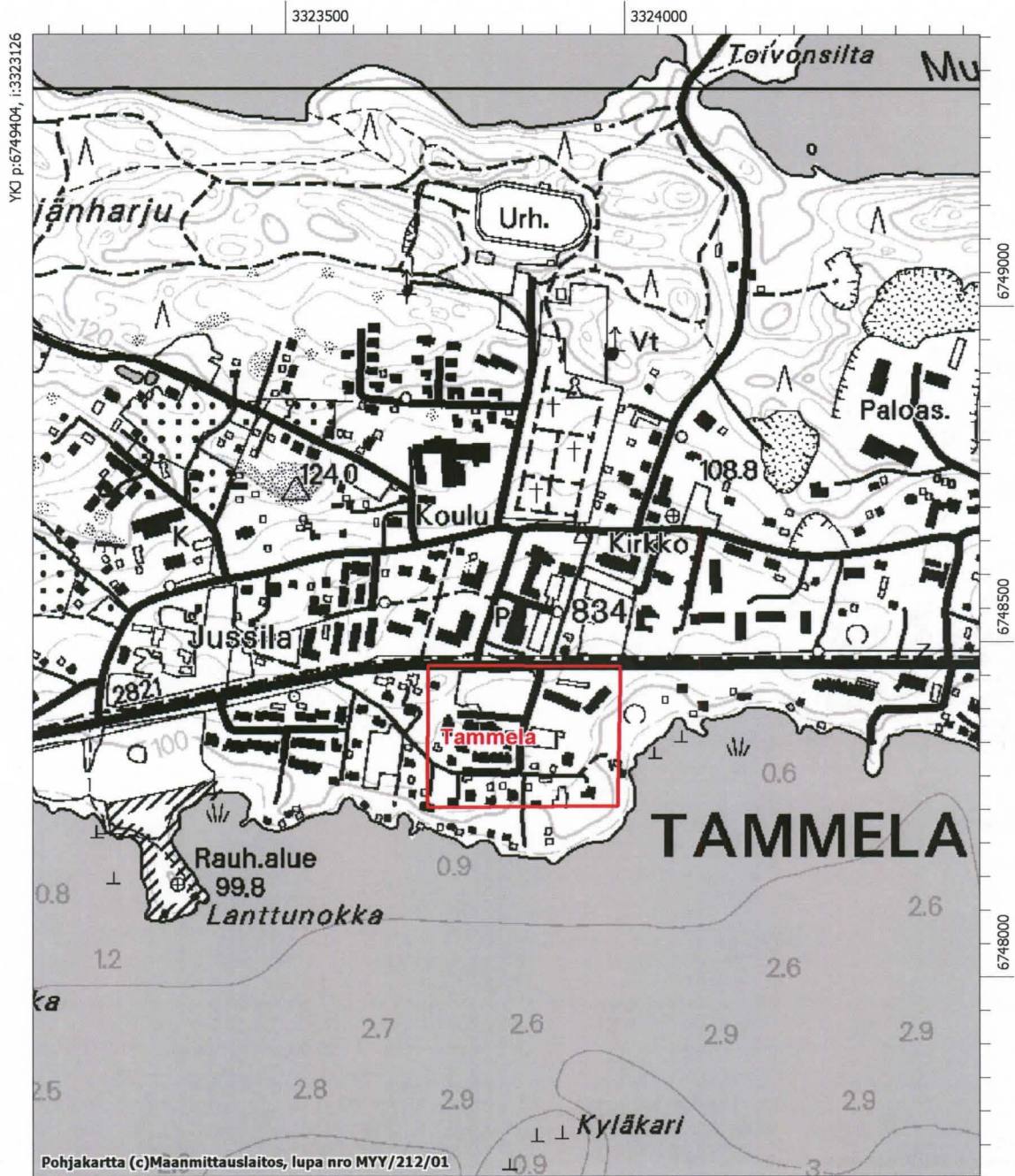
Tammela Talpia (Dalpiil/Talpiala)

Pk 2024 06



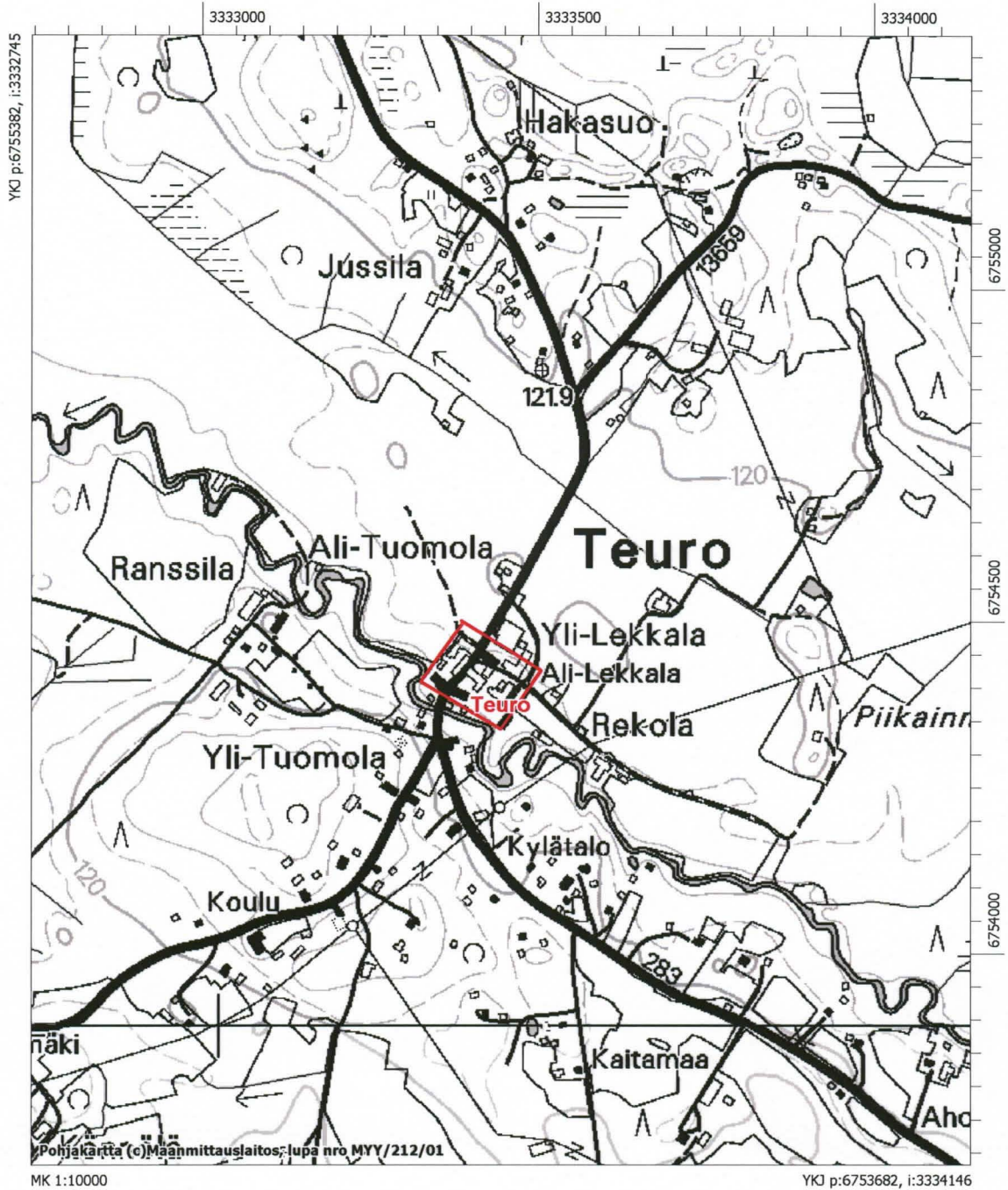
Tammela Tammela (Tammela kyrkieby)

Pk 2113 07



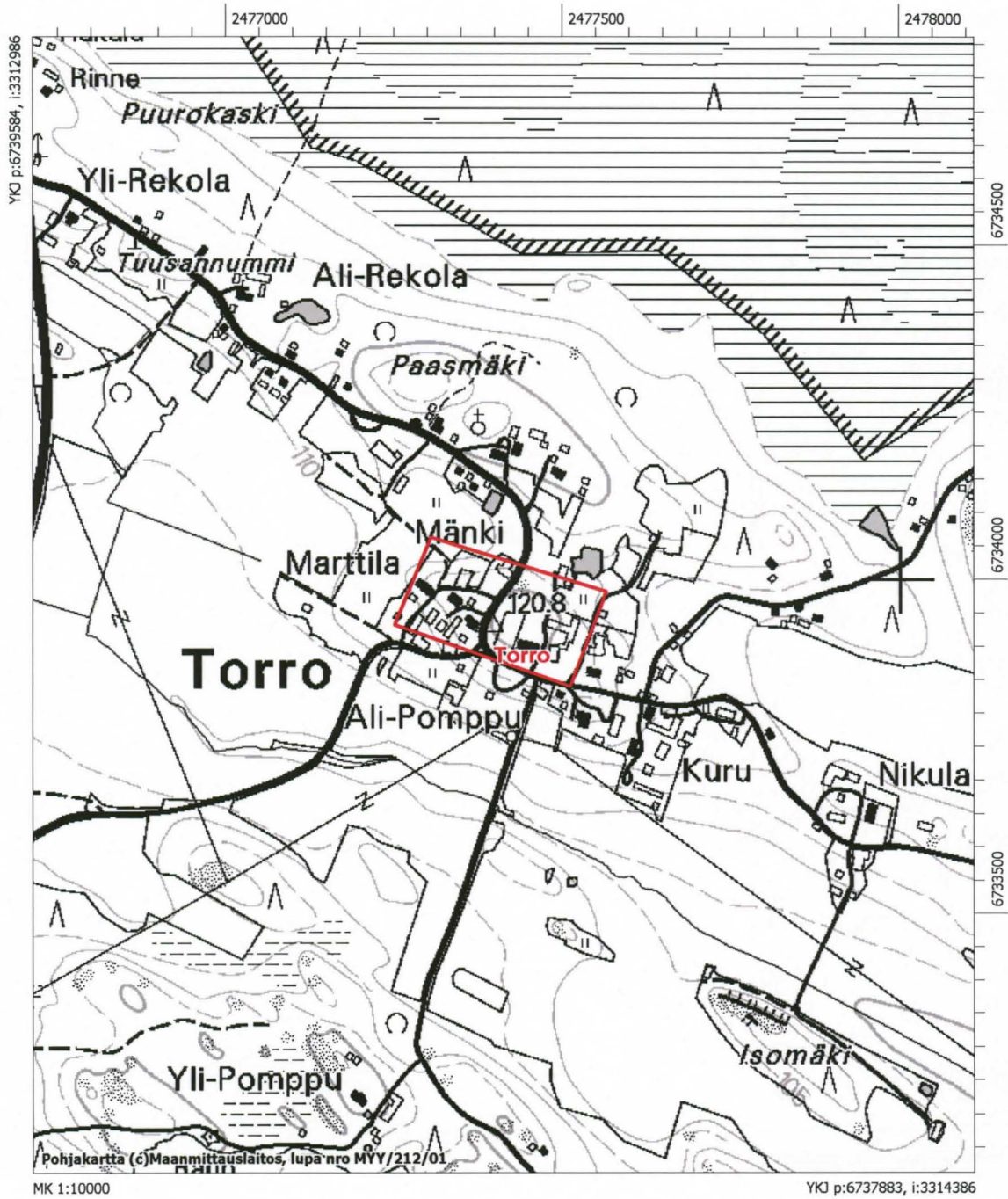
Tammela Teuro (Tauro/Teuros)

Pk 2113 11



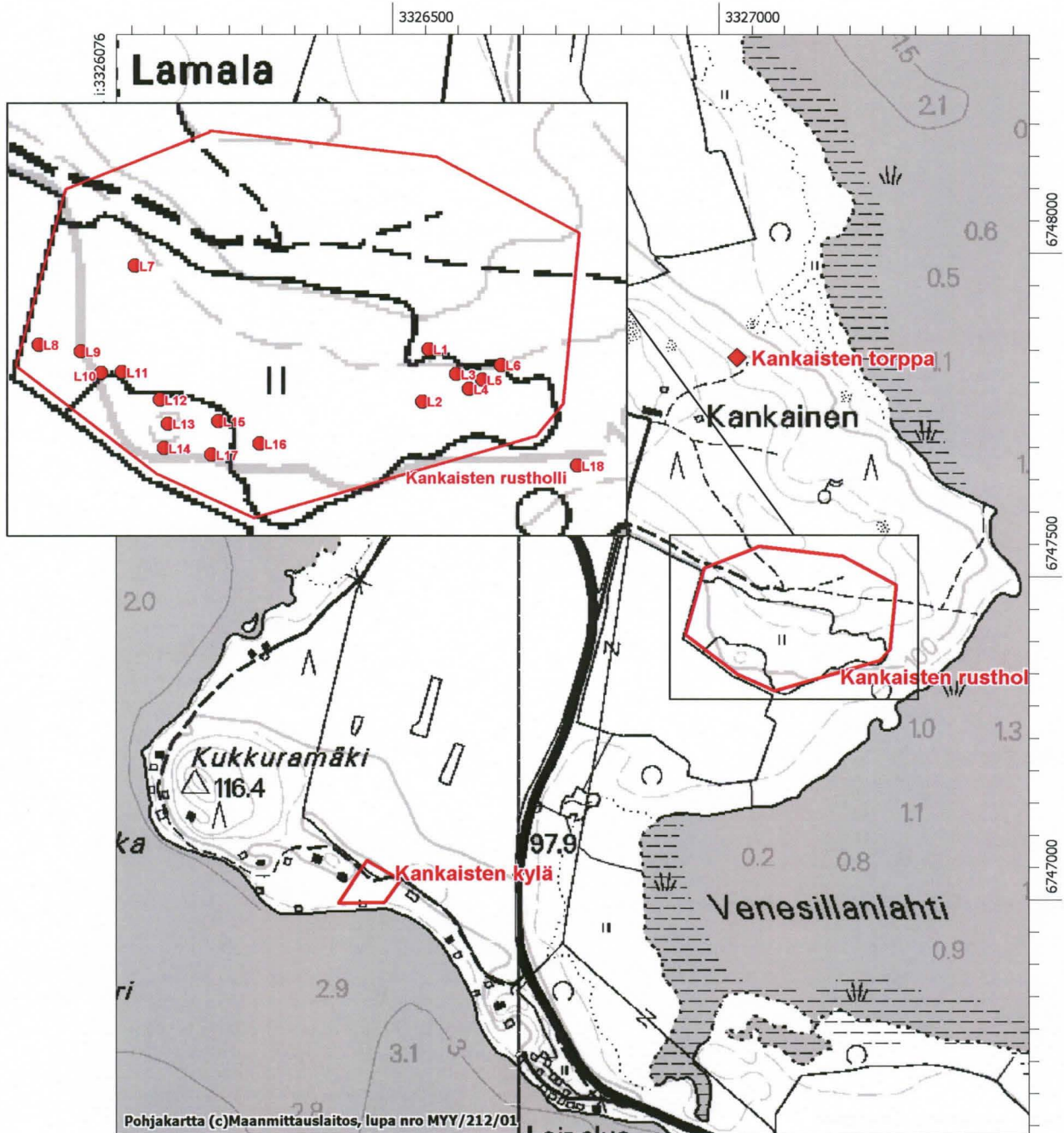
Tammela Torro (Tordo)

Pk 2024 06

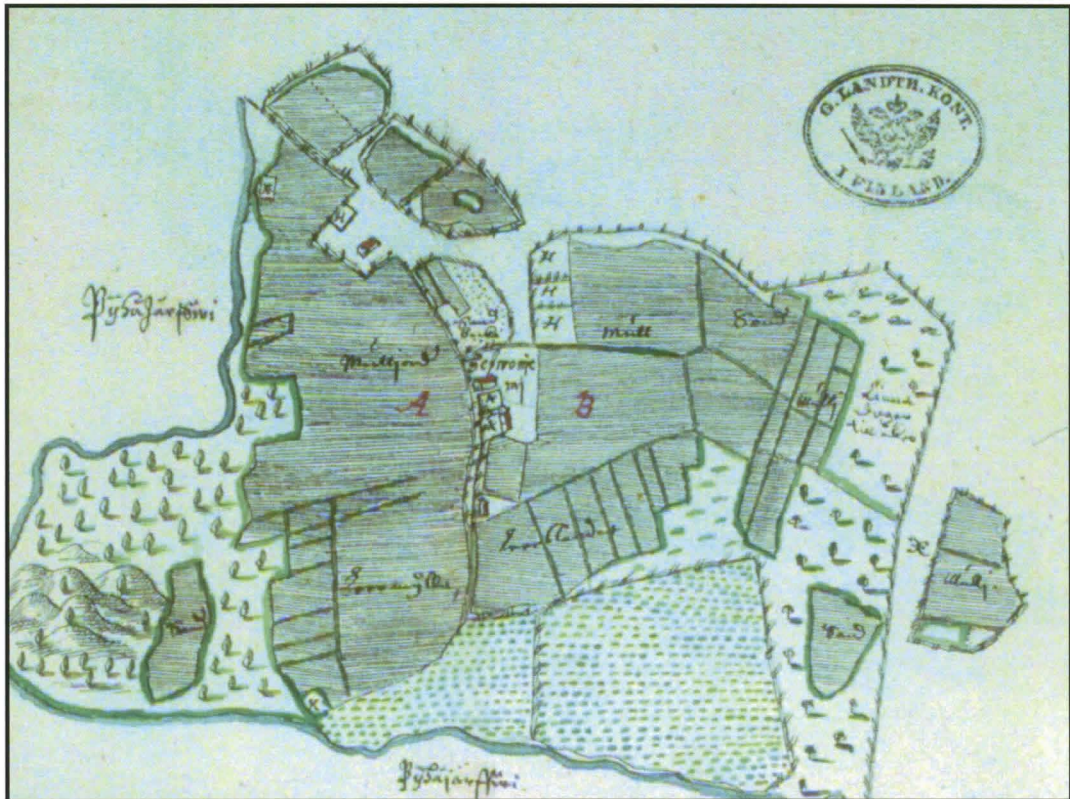


Tammela Kankaisten rustholli
Alakohteet: Latomukset 1–18

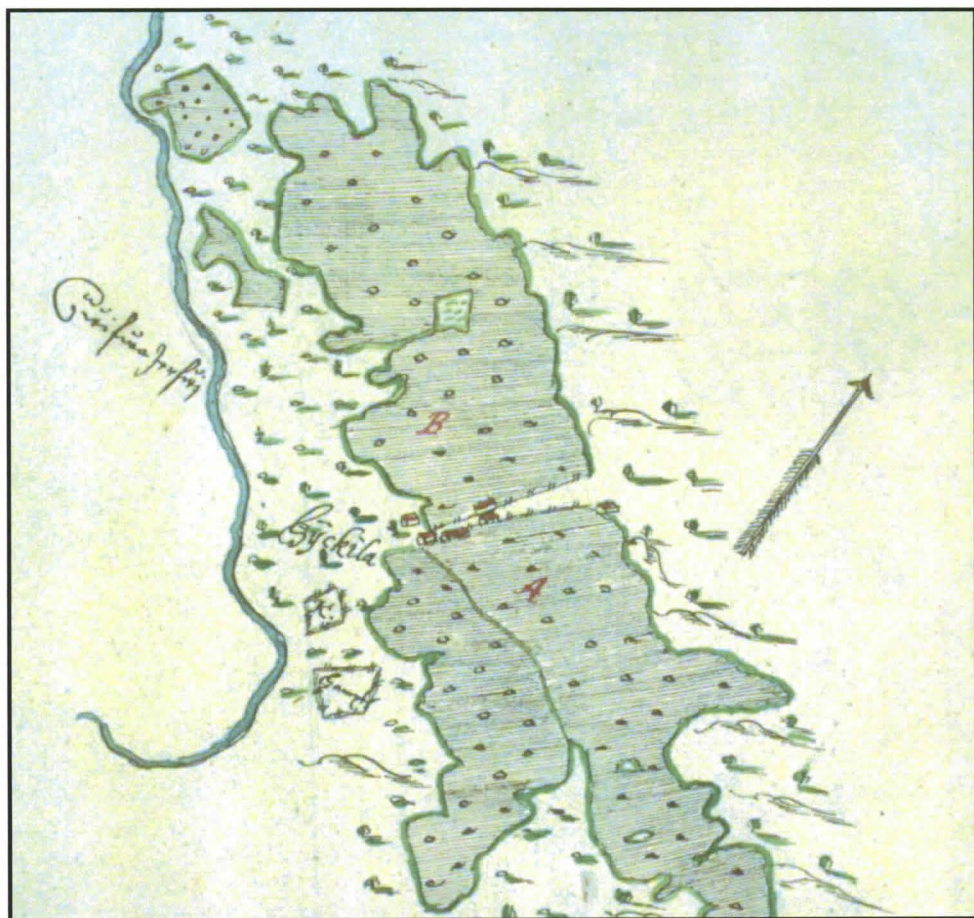
Pk 2113 10



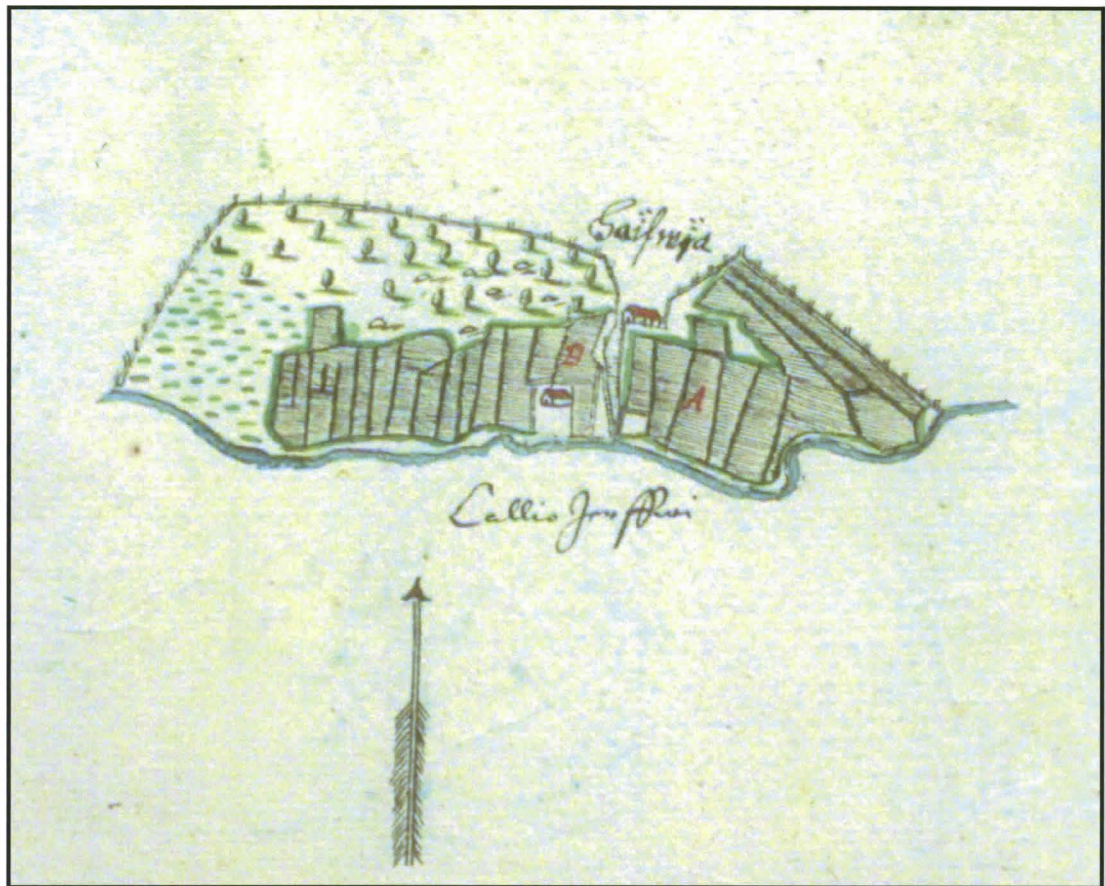
Historialliset kartat/Tammela



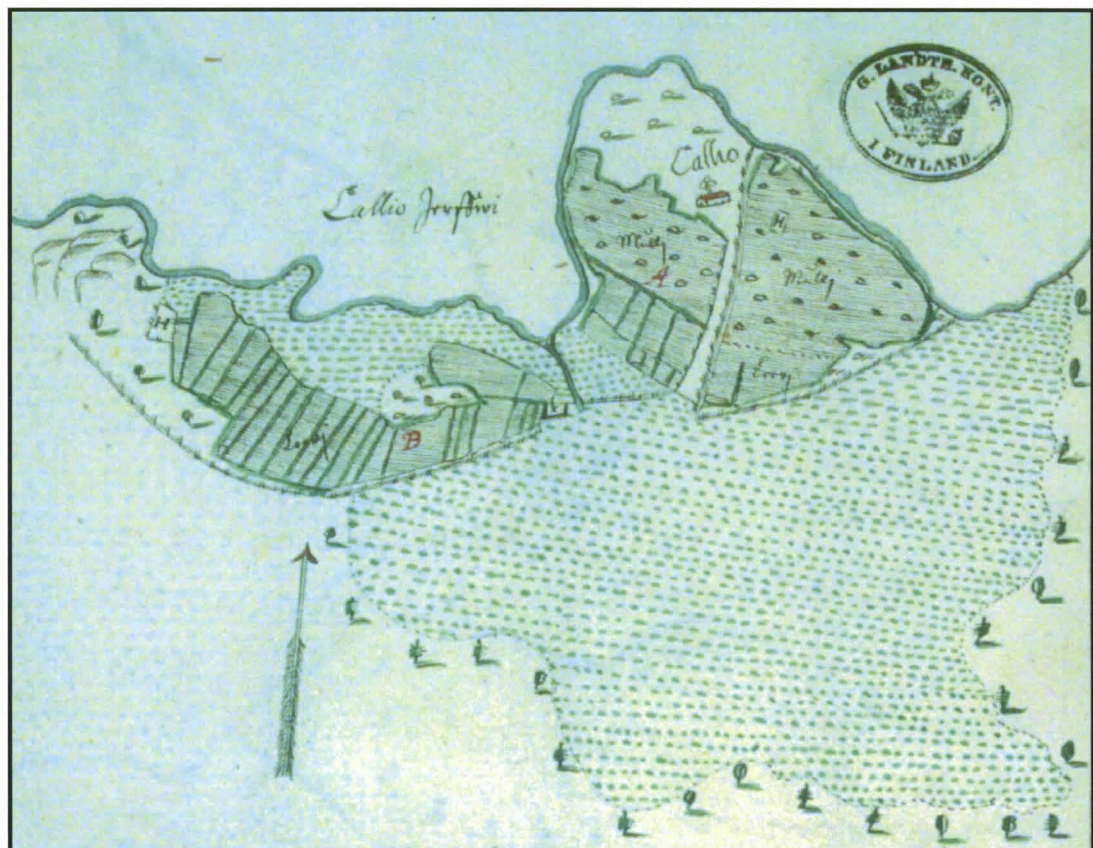
Tammelan Hevonniemen kylä v. 1648 kartassa (MHA, BB 1a 182).



Tammelan Hykkilän kylä v. 1648 kartassa (MHA, BB 1a 186).

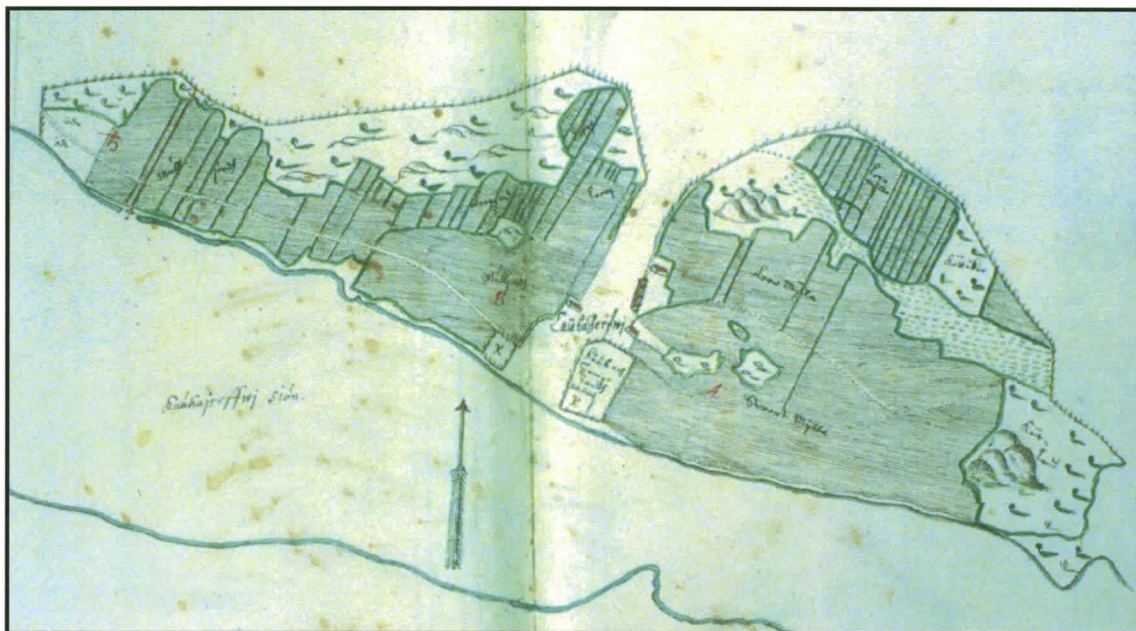


Tammelan Häiviän kylä v. 1648 kartassa (MHA, BB 1a 211).



Tammelan Kallion kylä v. 1649 kartassa (MHA, BB 1a 212).

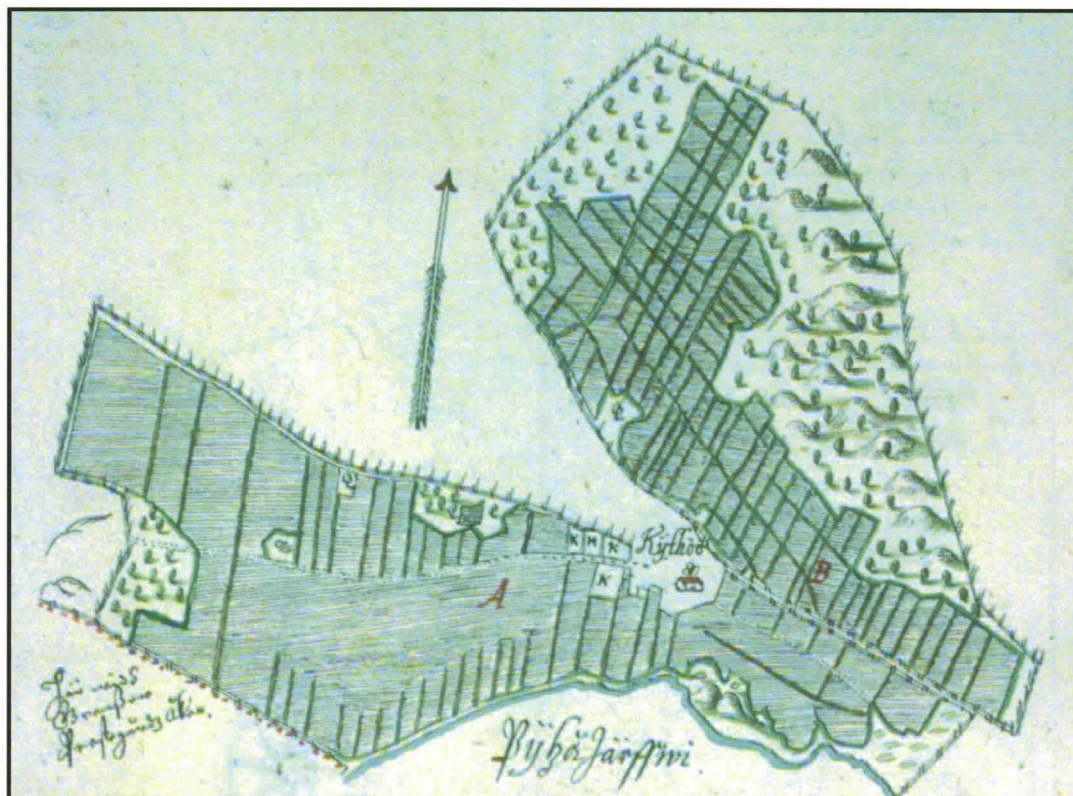
Historialliset kartat/Tammela



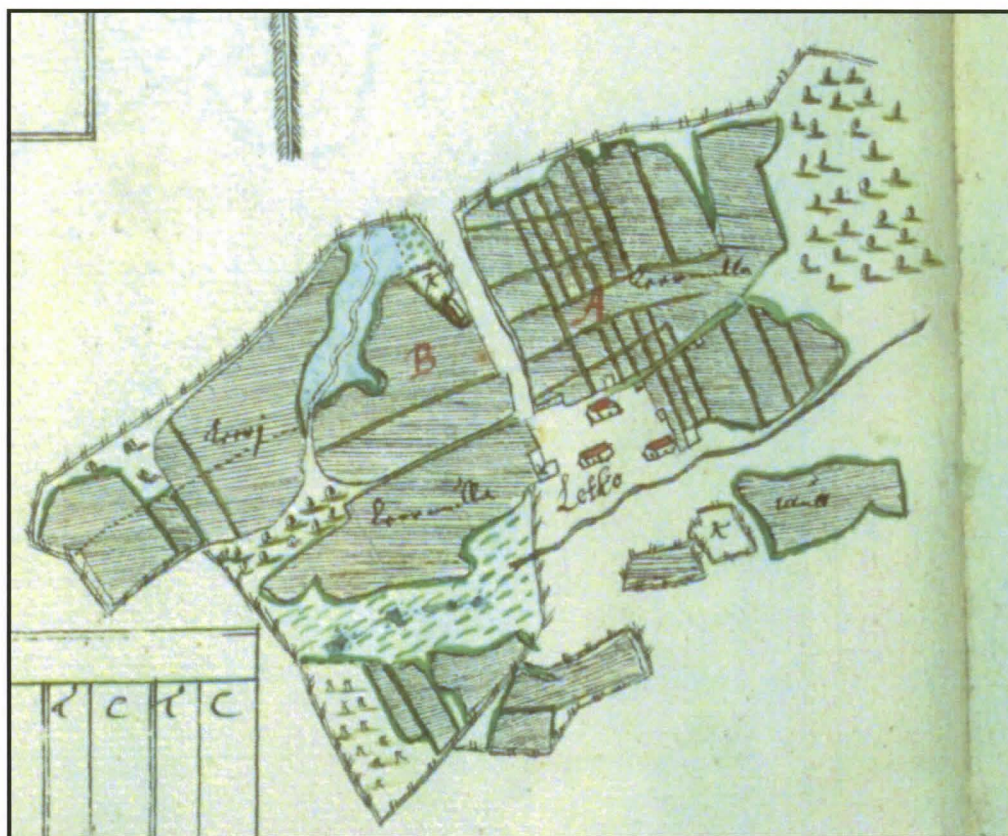
Tammelan Kaukjärven kylä v. 1649 kartassa (MHA, BB 1a 217–218).



Tammelan Kaukolan kylä v. 1649 kartassa (MHA, BB 1a 190).

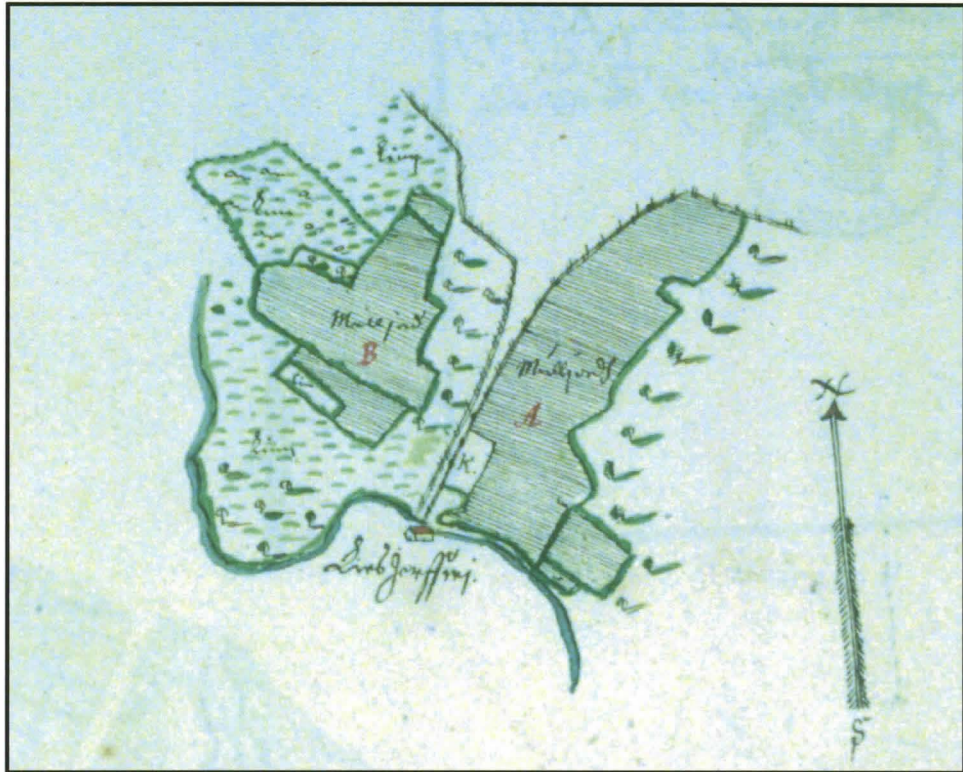


Tammelan Kydönkylä v. 1649 kartassa (MHA, BB 1a 176).

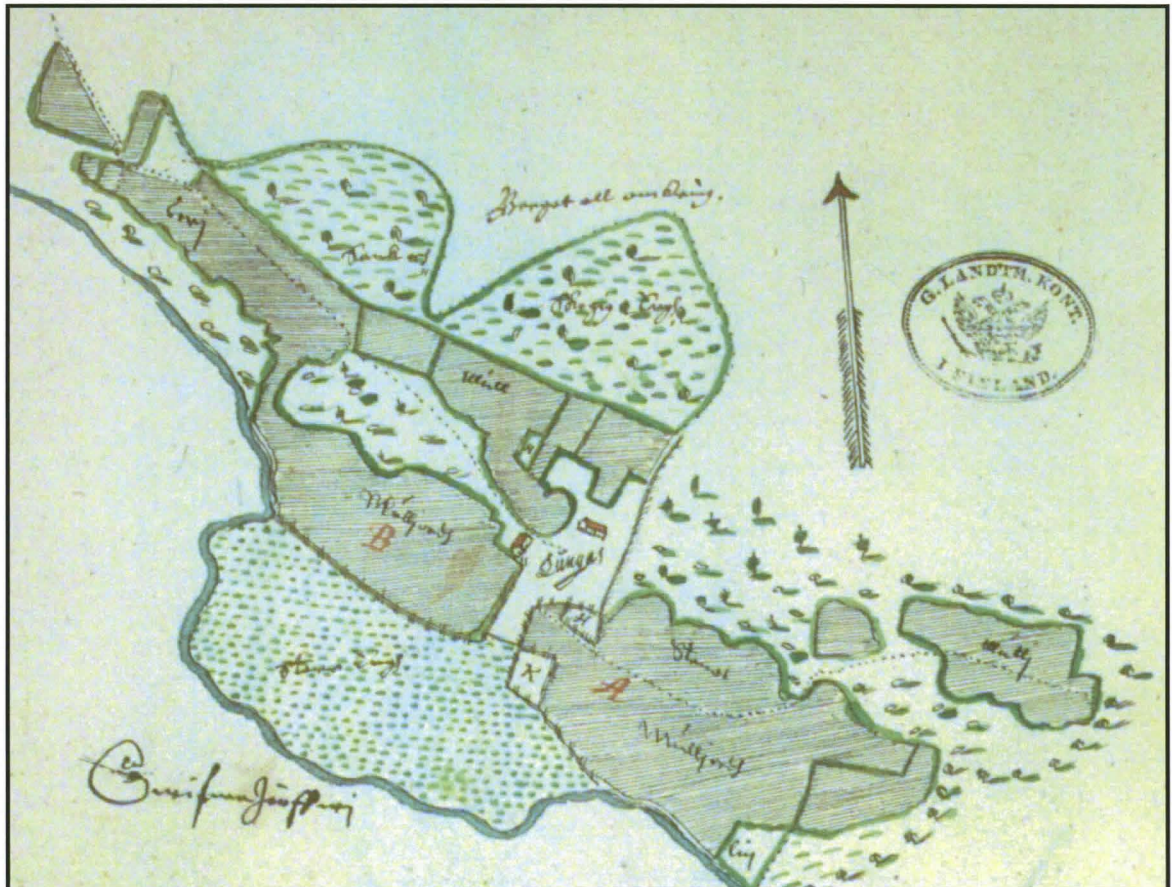


Tammelan Letkun kylä v. 1649 kartassa (MHA, BB 1a 197).

Historialliset kartat/Tammela

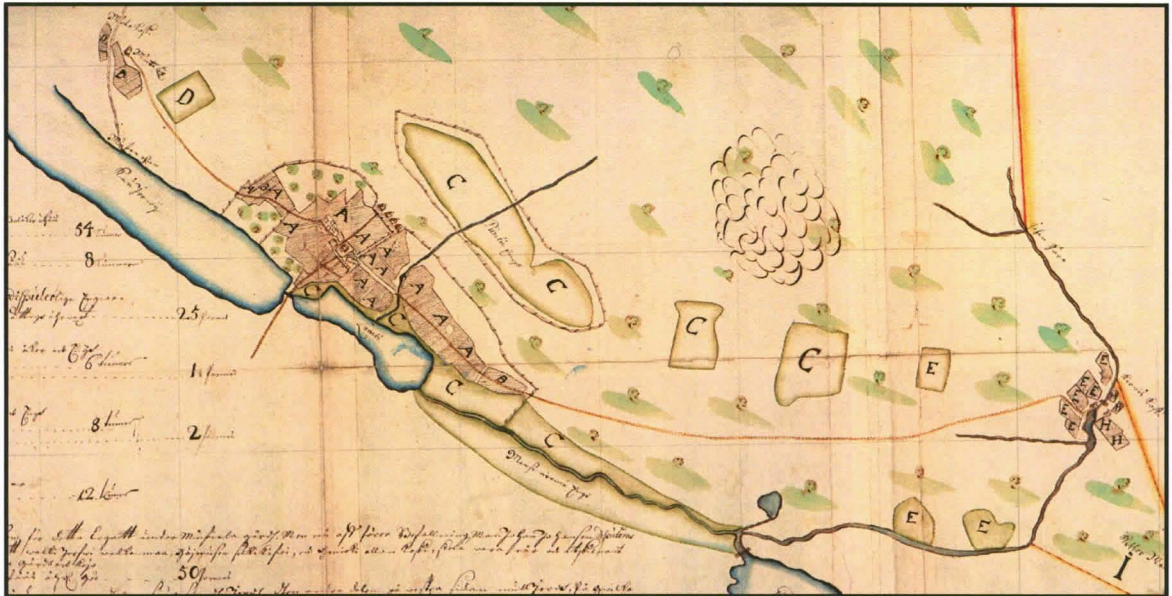


Tammelan Liesjärven kylä v. 1649 kartassa (MHA, BB 1a 196).

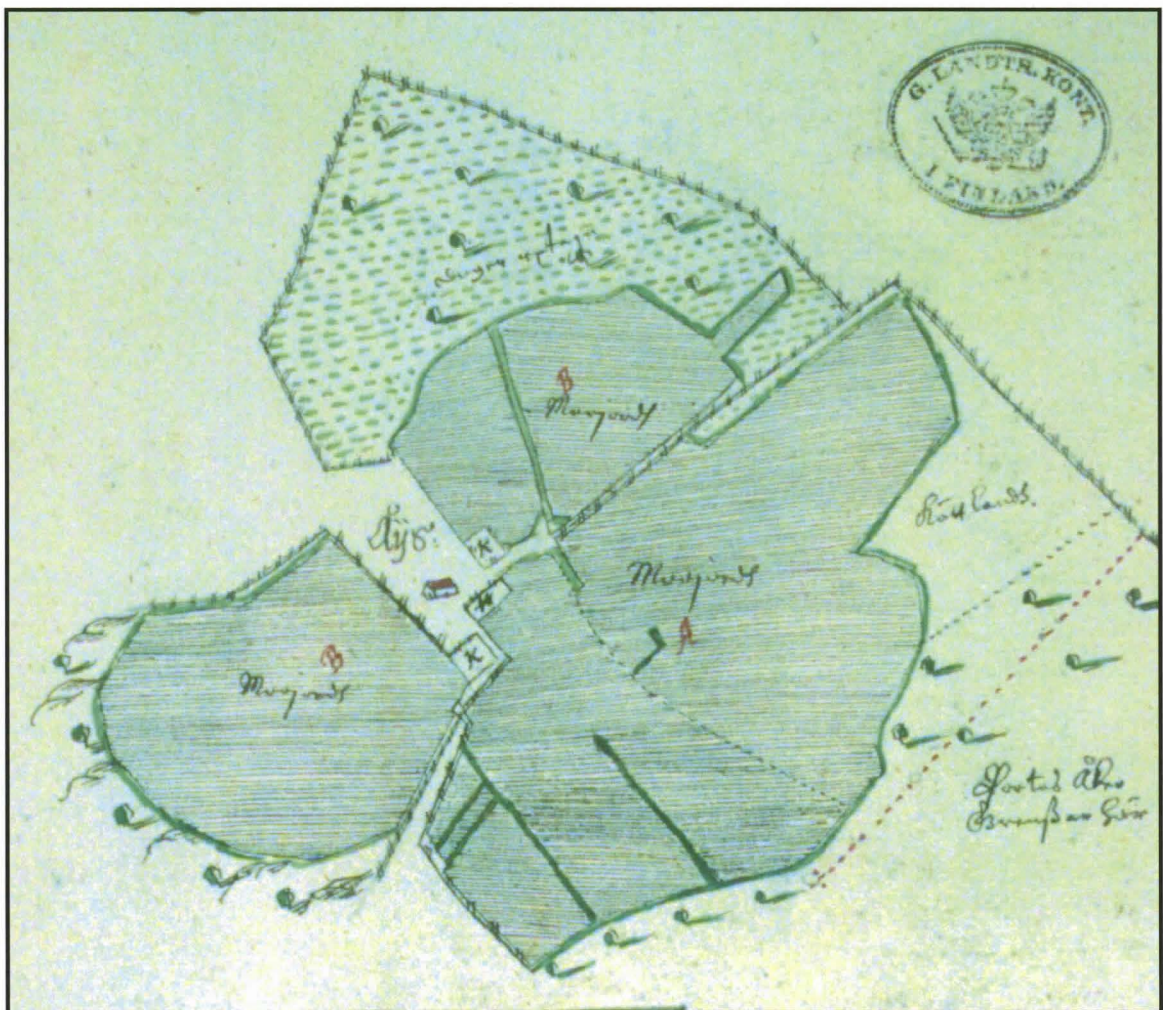


Tammelan Lunkaan kylä v. 1649 kartassa (MHA, BB 1a 184).

Historialliset kartat/Tammela



Tammelan Mustialan kylä v. 1684 kartassa (MHA, H79 5/1–2).

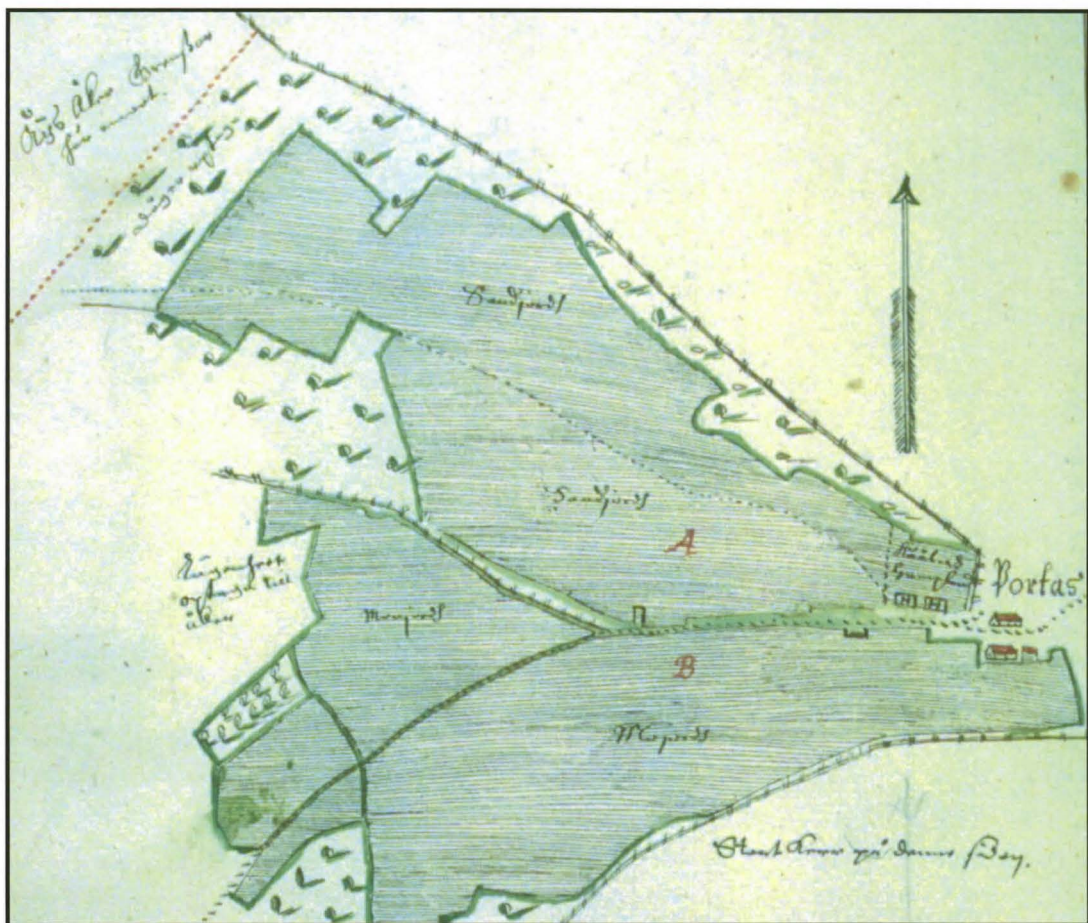


Tammelan Ojastenkylä v. 1649 kartassa (MHA, BB 1a 192).

Historialliset kartat/Tammela



Tammelan Patamon kylä v. 1649 kartassa (MHA, BB 1a 199).



Tammelan Portaan kylä v. 1649 kartassa (MHA, BB 1a 195).

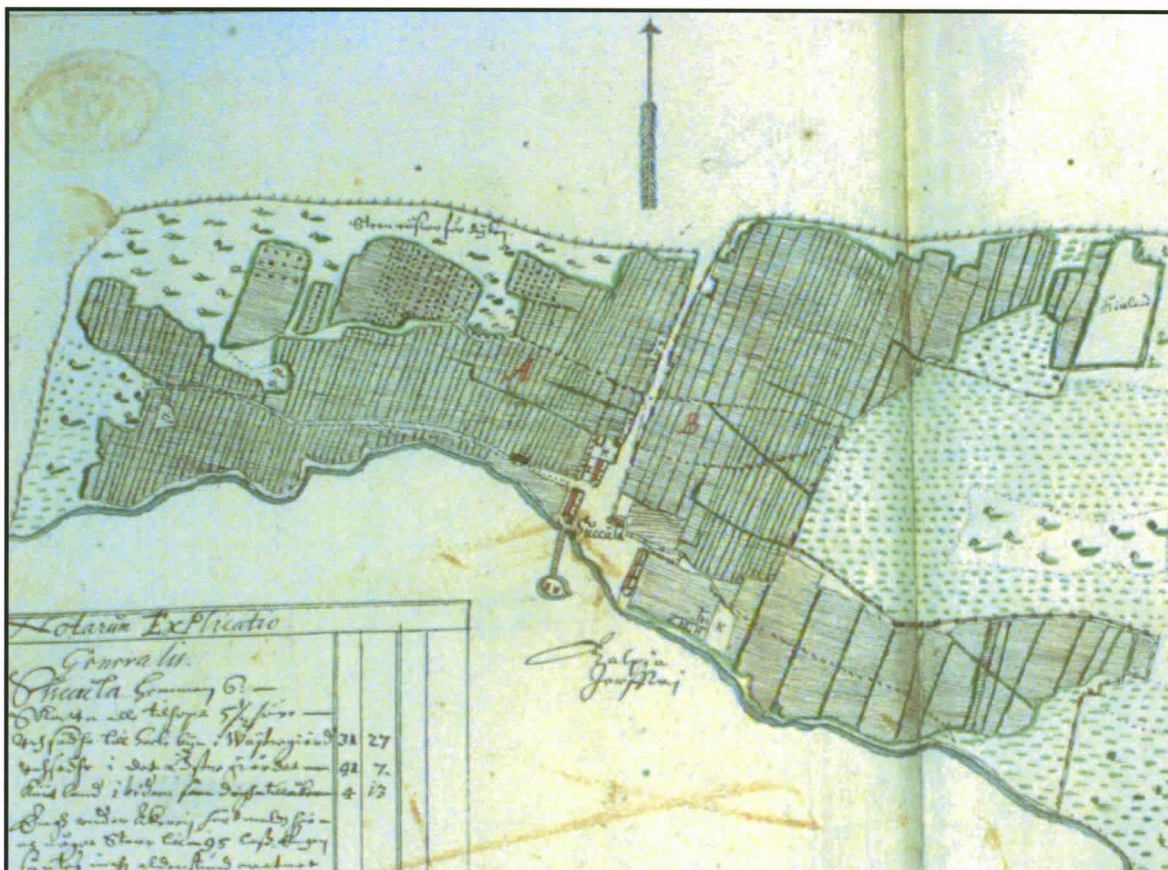


Tammelan Riihivalkaman kylä v. 1649 kartassa (MHA, BB 1a 201–202).

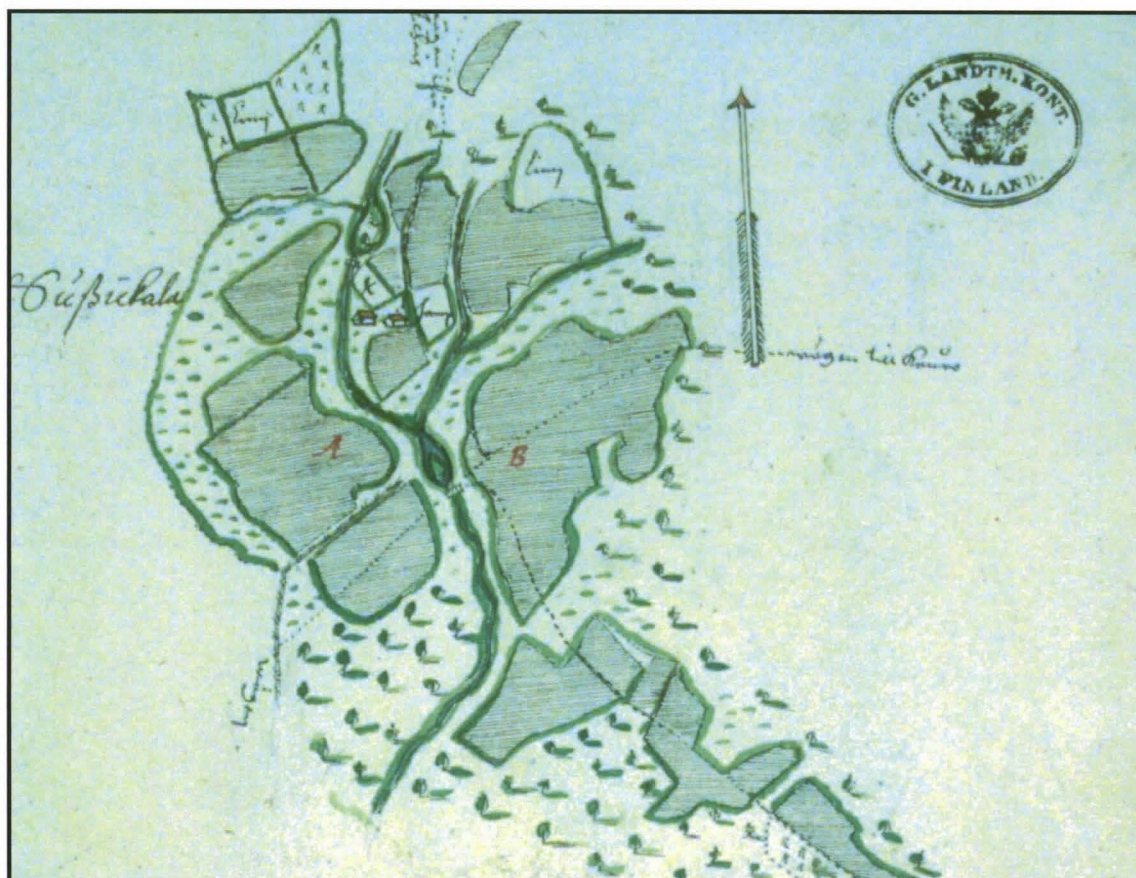


Tammelan Saaren kylä v. 1649 kartassa (MHA, BB 1a 189).

Historialliset kartat/Tammela

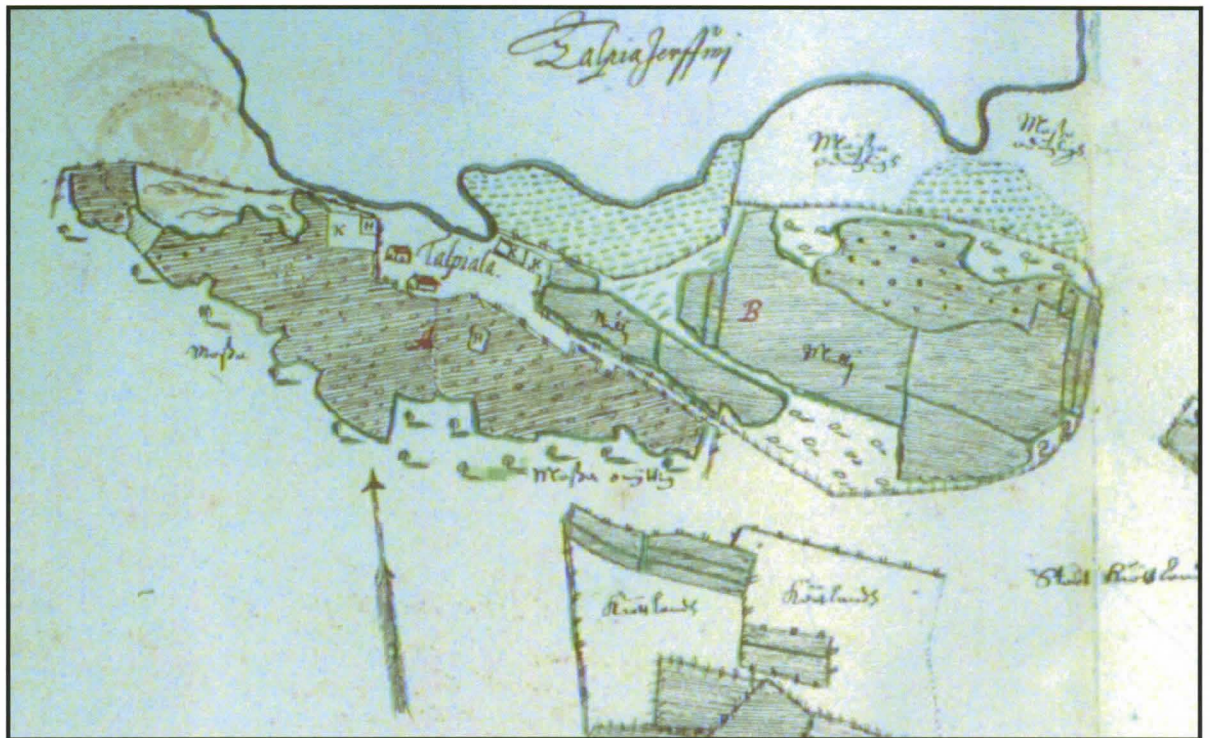


Tammelan Sukulan kylä v. 1649 kartassa (MHA, BB 1a 214)



Tammelan Susikkaan kylä v. 1649 kartassa (MHA, BB 1a 220).

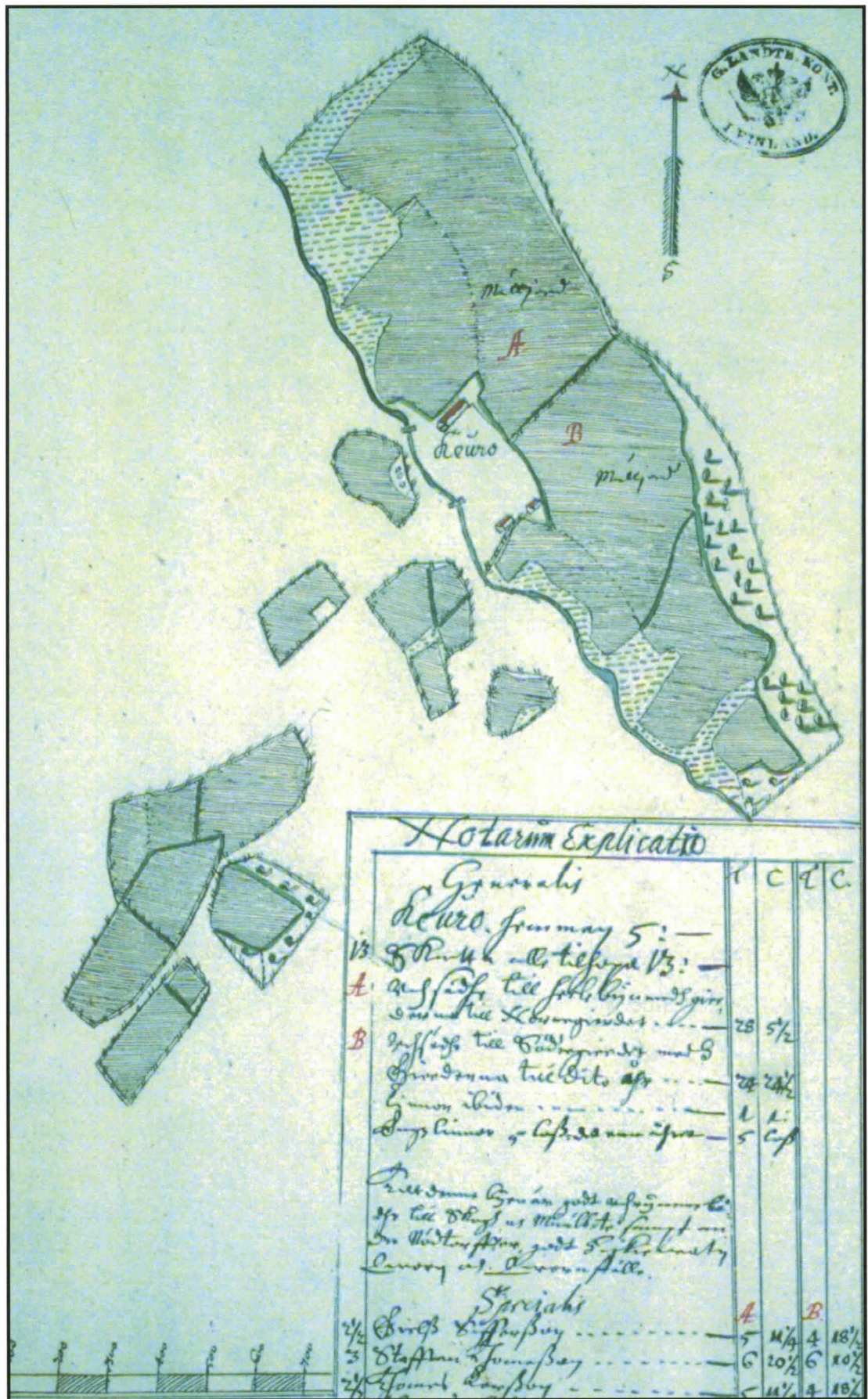
Historialliset kartat/Tammela



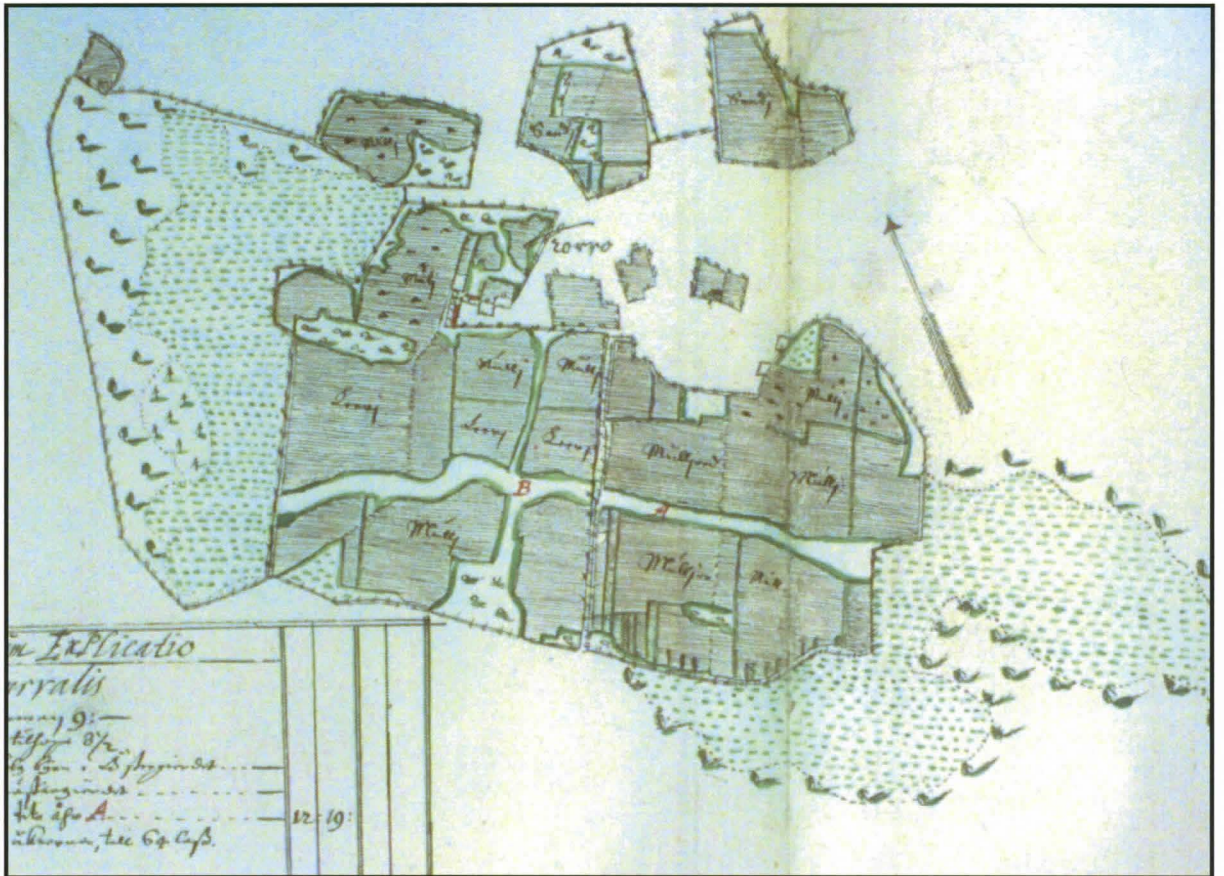
Tammelan Talpian kylä v. 1642 kartassa (MHA, BB 1a 213).



Tammelan kirkonkylä v. 1649 kartassa (MHA, BB 1a 180).



Tammelan Teuron kylä v. 1649 kartassa (MHA, BB 1a 222).



Tammelan Torron kylä v. 1649 kartassa (MHA, BB 1a 205).

Notes:

007240
07/10/2005

